

WAAS CH 58319 W34A	APP CRS 344°	Rwy Ldg TDZE Apt Elev	6000 100 100
--	------------------------	-----------------------------	---

RNAV (GPS) RWY 34

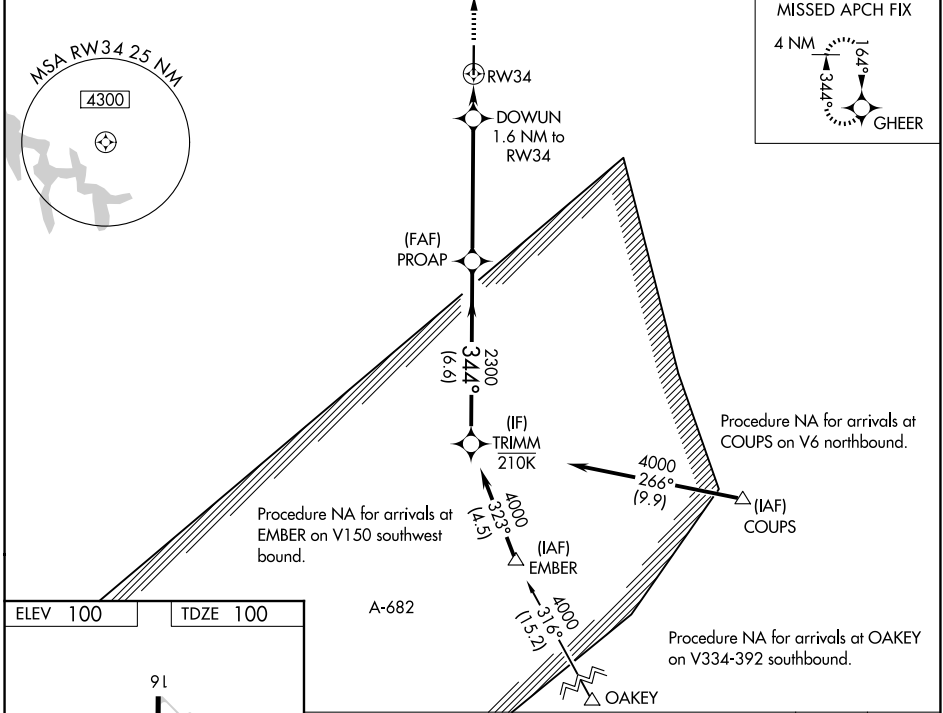
YOLO COUNTY (DWA)

RNP APCH - GPS.

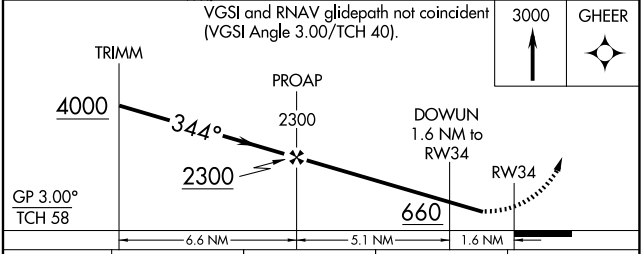
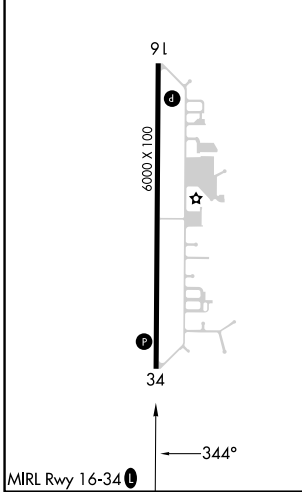
▼ Rwy 34 helicopter visibility reduction below ¼ SM NA. Baro-VNAV NA when using SUU altimeter setting. For uncompensated Baro-VNAV systems, LNAV/VNAV NA below -15°C or above 54°C. When local altimeter setting not received, use SUU altimeter setting and increase LPV DA to 465 feet and all visibilities ½ SM. Increase LNAV/VNAV DA to 550 feet and all visibilities ¼ SM. Increase all MDAs 60 feet and LNAV visibility Cat C/D ¼ SM.

MISSED APPROACH: Climb to 3000 direct GHEER and hold, continue climb-in-hold to 3000.

AWOS-3P 125.775	TRAVIS APP CON 126.6 281.45	UNICOM 123.0 (CTAF) 0
---------------------------	---------------------------------------	---------------------------------



ELEV 100	TDZE 100
----------	----------



CATEGORY	A	B	C	D
LPV DA	415-1 315 (400-1)			
LNAV/VNAV DA	500-1½ 400 (400-1½)			
LNAV MDA	500-1 400 (400-1)		500-1½ 400 (400-1½)	

SW-2, 14 MAY 2026 to 11 JUN 2026

SW-2, 14 MAY 2026 to 11 JUN 2026