

WAAS CH <b>86244</b> <b>W06A</b>	APP CRS <b>058°</b>	Rwy Ldg TDZE <b>2402</b> Apt Elev <b>2419</b>
--	------------------------	---

# RNAV (GPS) RWY 6R

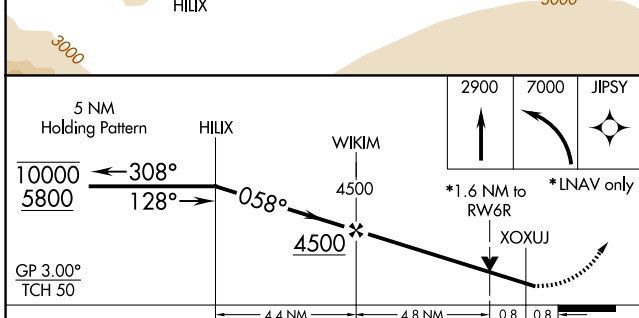
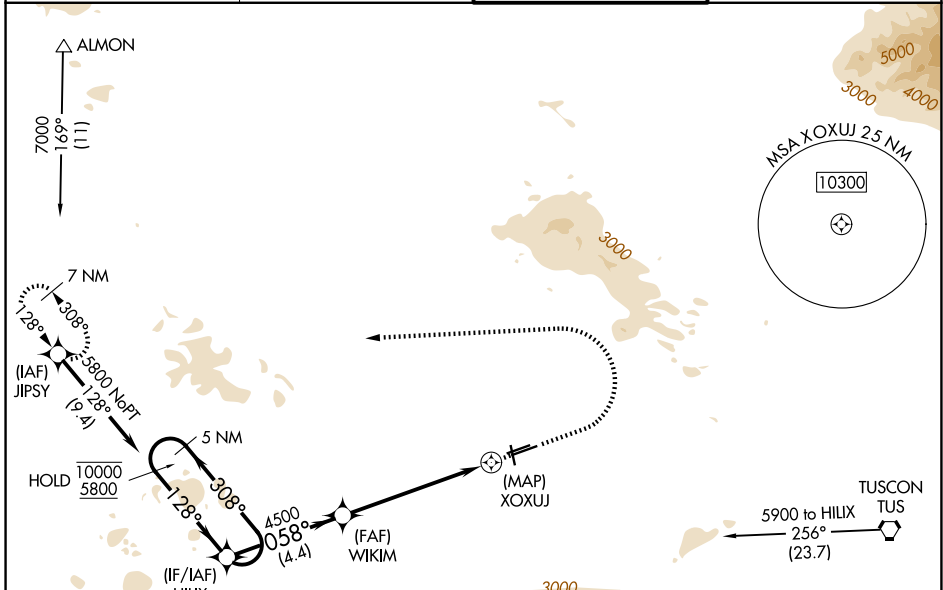
RYAN FLD (RYN)

RNP APCH - GPS.

**⚠** Circling NA for Cat D north of Rwy 24R and east of Rwy 15.  
**⚠** Rwy 6R helicopter visibility reduction below 3/4 SM NA.  
 For uncompensated Baro-VNAV systems, LNAV/VNAV NA below -19°C or above 54°C.

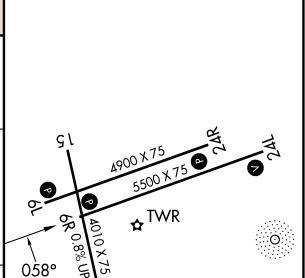
**MISSED APPROACH:** Max 240K until JIPSY.  
 Climb to 2900 then climbing left turn to 7000 direct JIPSY and hold.  
 Continue climb-in-hold to 7000.

ATIS <b>133.35</b>	TUCSON APP CON <b>128.5 273.6</b>	RYAN TOWER★ <b>125.8 (CTAF) 0</b>	GND CON <b>118.2</b>
-----------------------	--------------------------------------	--------------------------------------	-------------------------



ELEV 2419	TDZE 2402
-----------	-----------

CATEGORY	A	B	C	D
LPV DA		2675-7/8	273 (300-7/8)	
LNAV/VNAV DA		2756-1	354 (400-1)	
LNAV MDA	2960-1	558 (600-1)	2960-1 1/8	558 (600-1 1/8)
CIRCLING	2960-1	541 (600-1)	3040-1 3/4 621 (700-1 3/4)	3320-3 901 (1000-3)



MIRL Rwy 6L-24R  
 REIL Rwy 6R and 6L  
 MIRL Rwy 6R-24L and 15-33 0

SW-4, 14 MAY 2026 to 11 JUN 2026

SW-4, 14 MAY 2026 to 11 JUN 2026