

(OYODA2.OYODA) 25275

OYODA TWO DEPARTURE (RNAV)

AL-6514 (FAA)

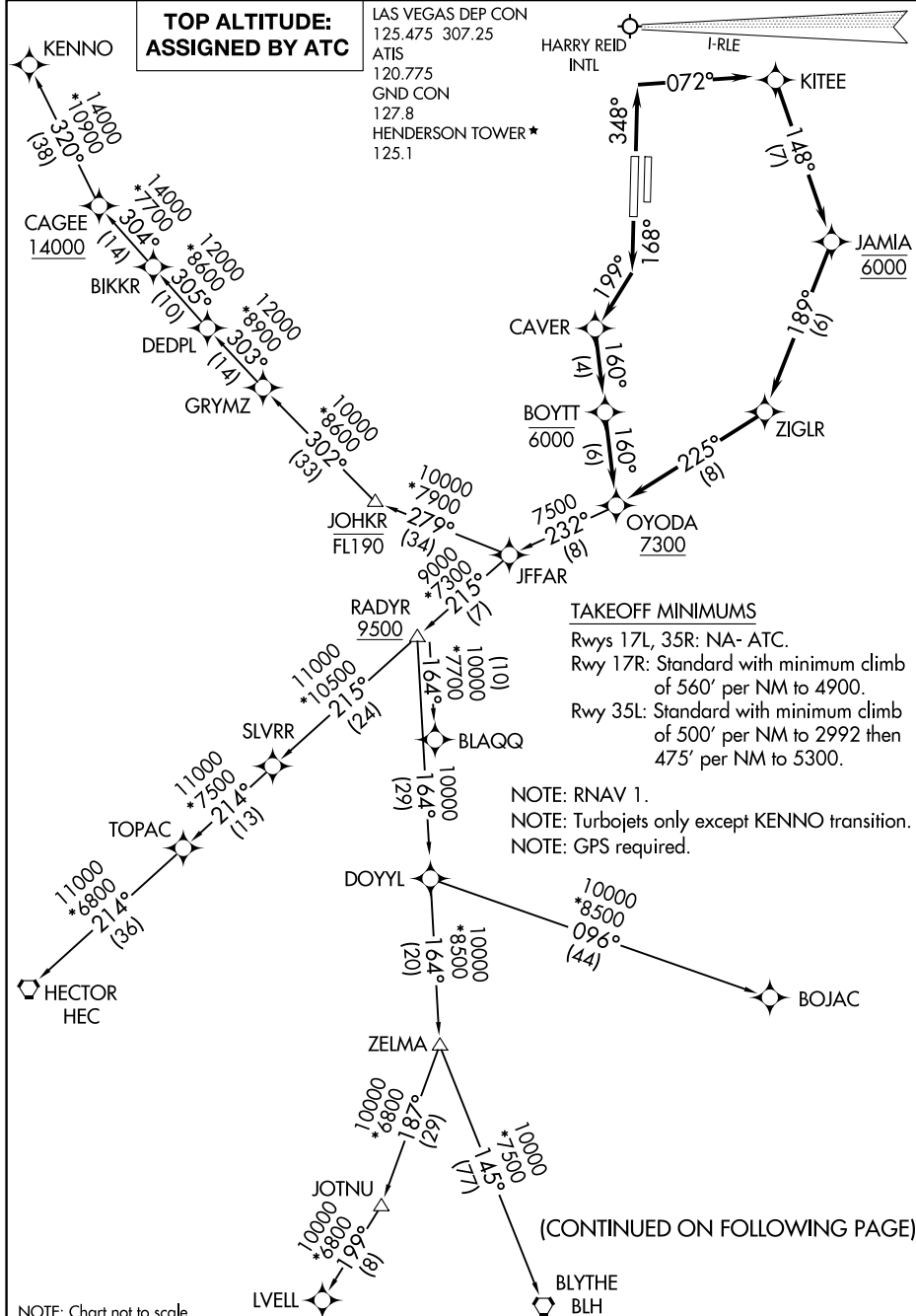
HENDERSON EXEC (HND)
LAS VEGAS, NEVADA

**TOP ALTITUDE:
ASSIGNED BY ATC**

LAS VEGAS DEP CON
125.475 307.25
ATIS
120.775
GND CON
127.8
HENDERSON TOWER *
125.1

HARRY REID
INTL

I-RLE



NOTE: Chart not to scale.

OYODA TWO DEPARTURE (RNAV)

(OYODA2.OYODA) 22APR21

LAS VEGAS, NEVADA
HENDERSON EXEC (HND)

SW-4, 14 MAY 2026 to 11 JUN 2026

SW-4, 14 MAY 2026 to 11 JUN 2026

(CONTINUED ON FOLLOWING PAGE)



DEPARTURE ROUTE DESCRIPTION

TAKEOFF RUNWAY 17R: Climb on heading 168° to intercept course 199° to CAVER, then on track 160° to cross BOYTT at or below 6000, then on track 160° to cross OYODA at or above 7300, thence. . . .

TAKEOFF RUNWAY 35L: Climb on heading 348° to intercept course 072° to KITEE, then on track 148° to cross JAMIA at 6000, then on track 189° to ZIGLR, then on track 225° to cross OYODA at or above 7300, thence. . . .

. . . (transition). Maintain ATC assigned altitude, expect filed altitude 10 minutes after departure.

BLAQQ TRANSITION (OYODA2.BLAQQ)

BLYTHE TRANSITION (OYODA2.BLH)

BOJAC TRANSITION (OYODA2.BOJAC)

HECTOR TRANSITION (OYODA2.HEC)

KENNO TRANSITION (OYODA2.KENNO)

LVELL TRANSITION (OYODA2.LVELL)

SLVRR TRANSITION (OYODA2.SLVRR)

SW-4, 14 MAY 2026 to 11 JUN 2026

SW-4, 14 MAY 2026 to 11 JUN 2026