

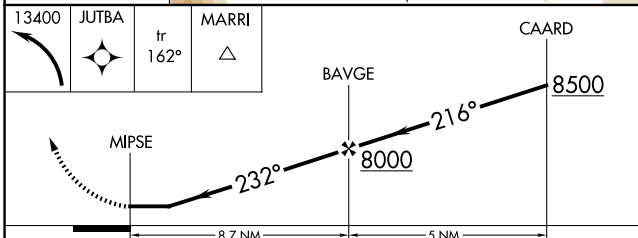
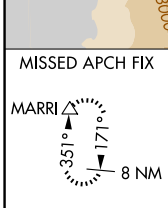
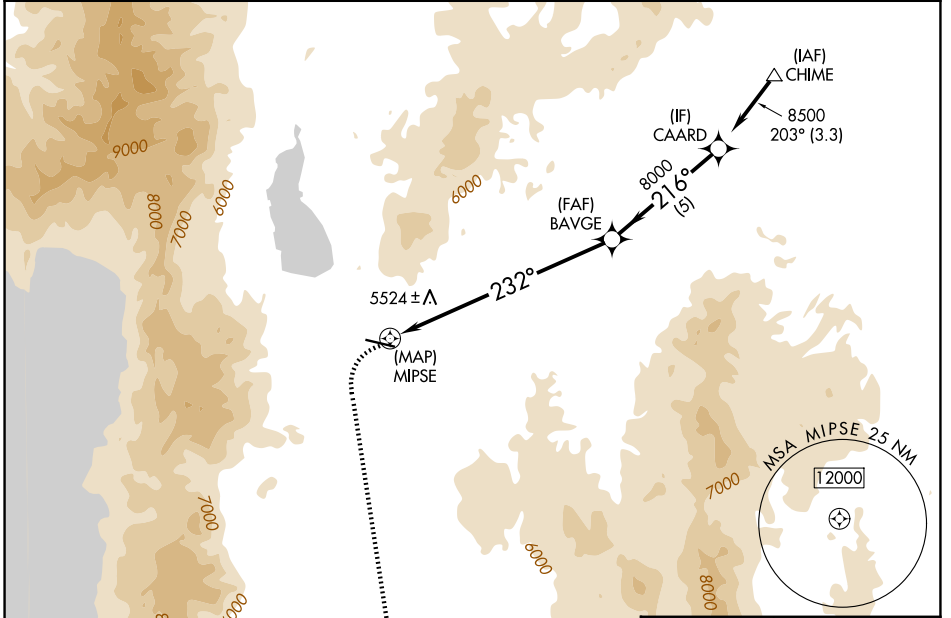
APP CRS	Rwy Ldg	N/A
232°	TDZE	N/A
	Apt Elev	4705

RNAV (GPS)-B

CARSON CITY (CXP)

RNP APCH.	MISSED APPROACH: Climbing left turn to 13400 direct JUTBA and on track 162° direct MARRI and hold, continue climb-in-hold to 13400.
<p>Circling NA north of Rwy 9-27. Procedure NA at night. -18°C</p>	

AWOS-3PT 119.925	NORCAL APP CON 119.2 279.55	UNICOM 123.0 (CTAF)
----------------------------	---------------------------------------	-------------------------------



ELEV 4705

MIRL Rwy 9-27
REIL Rws 9 and 27

CATEGORY	A	B	C	D
CIRCLING	6340-1¼ 1635 (1700-1¼)	6340-1½ 1635 (1700-1½)	6340-3 1635 (1700-3)	7660-3 2955 (3000-3)

SW-4, 14 MAY 2026 to 11 JUN 2026

SW-4, 14 MAY 2026 to 11 JUN 2026