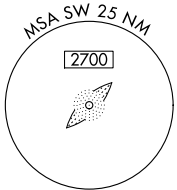
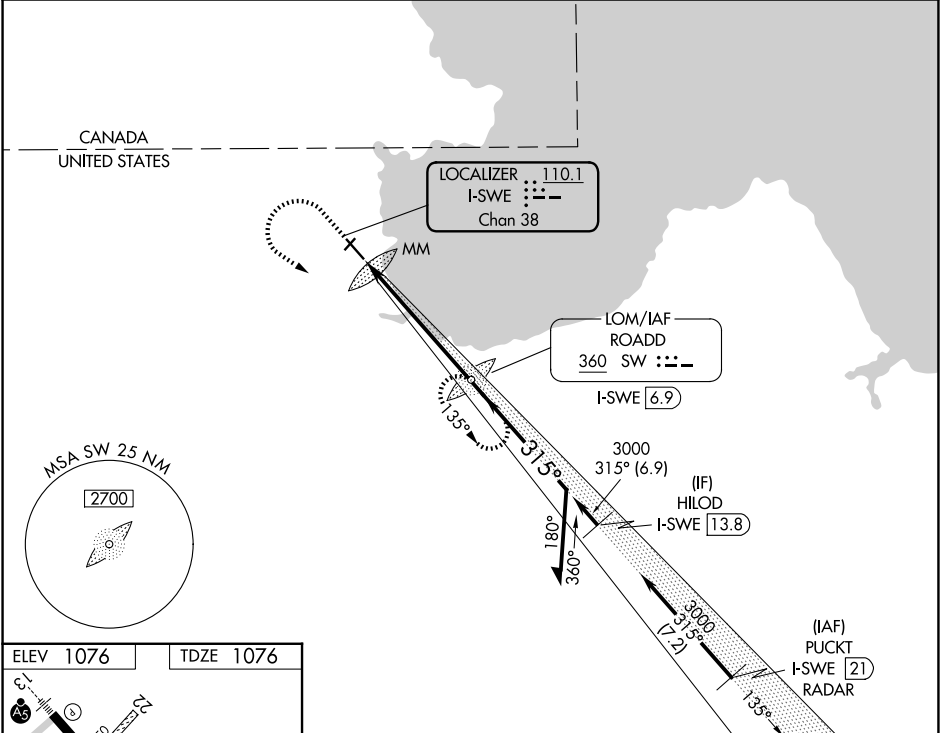


LOC/DME I-SWE 110.1 Chan 38	APP CRS 315°	Rwy Ldg TDZE Apt Elev	5400 1076 1076
---	------------------------	-----------------------------	---

ILS or LOC RWY 31

WARROAD INTL MEML (R.R.T)

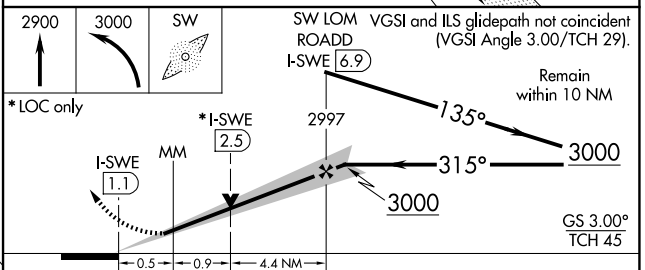
ADF required. RADAR required for procedure entry.		MALSR	MISSED APPROACH: Climb to 2900 then climbing left turn to 3000 direct ROADD LOM/I-SWE 6.9 DME and hold.	
⚠ NA Circling NA to Rwy 4 and 22. For inop ALS, increase S-LOC 31 Cat C/D visibility to 1 3/8 SM.				
AWOS-3 119.925	MINNEAPOLIS CENTER 134.75 251.1	GCO 121.725	UNICOM 123.05 (CTAF) 0	



ELEV 1076	TDZE 1076
-----------	-----------

HIRL Rwy 13-31 0

FAF to MAP 5.8 NM					
Knots	60	90	120	150	180
Min:Sec	5:48	3:52	2:54	2:19	1:56



CATEGORY	A	B	C	D
S-ILS 31	1276-1/2 200 (200-1/2)			
S-LOC 31	1560-1/2	484 (500-1/2)	1560-1	484 (500-1)
CIRCLING	1560-1	484 (500-1)	1960-2 3/4 884 (900-2 3/4)	1960-3 884 (900-3)

NC-1, 14 MAY 2026 to 11 JUN 2026

NC-1, 14 MAY 2026 to 11 JUN 2026