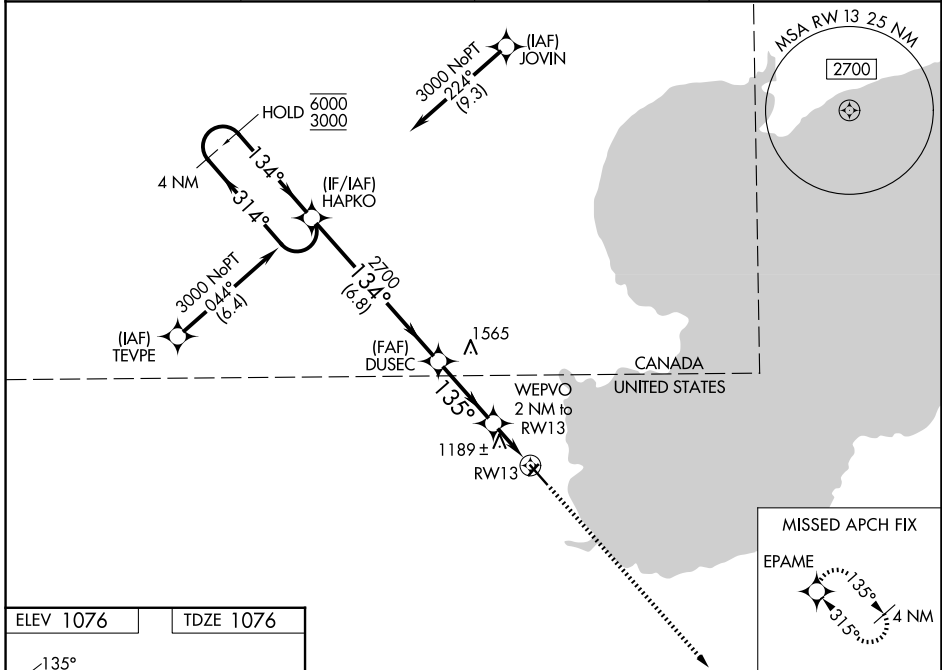


WAAS CH 69437 W13A	APP CRS 135°	Rwy Ldg TDZE Apt Elev	5400 1076 1076
--	------------------------	-----------------------------	---

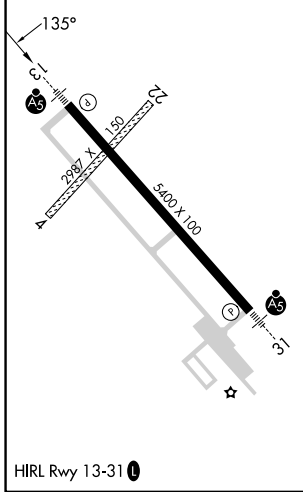
RNAV (GPS) RWY 13

WARROAD INTL MEML (R.R.T)

RNP APCH.		MALSR	MISSED APPROACH: Climb to 3000 direct EPAME and hold.
<p>⚠ Circling NA to Rwy 4 and 22. Inop table does not apply. For uncompensated Baro-VNAV systems, LNAV/VNAV NA below -21°C or above 54°C.</p>			
AWOS-3 119.925	MINNEAPOLIS CENTER 134.75 251.1	GCO 121.725	UNICOM 123.05 (CTAF) ①



ELEV 1076	TDZE 1076
-----------	-----------



4 NM Holding Pattern	VGSI and RNAV glidepath not coincident (VGSI Angle 3.00/TCH 29).			3000	EPAME
<p>HAPKO</p> <p>6000 ← 314°</p> <p>3000 → 134°</p>		<p>DUSEC</p> <p>2700</p> <p>134°</p>		<p>WEPVO</p> <p>2 NM to RWY 13</p> <p>135°</p> <p>*1.1 NM to RWY 13</p> <p>*1740</p>	
GP 3.00°		TCH 45		<p>6.8 NM</p> <p>3 NM</p> <p>0.9 NM</p> <p>1.1</p>	
CATEGORY	A	B	C	D	
LPV DA	1276-3/4		200 (200-3/4)		
LNAV/VNAV DA	1365-1		289 (300-1)		
LNAV MDA	1440-1		364 (400-1)		
CIRCLING	1500-1 424 (500-1)	1540-1 464 (500-1)	1960-23/4 884 (900-23/4)	1960-3 884 (900-3)	

NC-1, 14 MAY 2026 to 11 JUN 2026

NC-1, 14 MAY 2026 to 11 JUN 2026