

WAAS CH 70606 W06A	APP CRS 055°	Rwy Idg TDZE Apt Elev	5003 1451 1458
--	------------------------	-----------------------------	---

RNAV (GPS) RWY 6

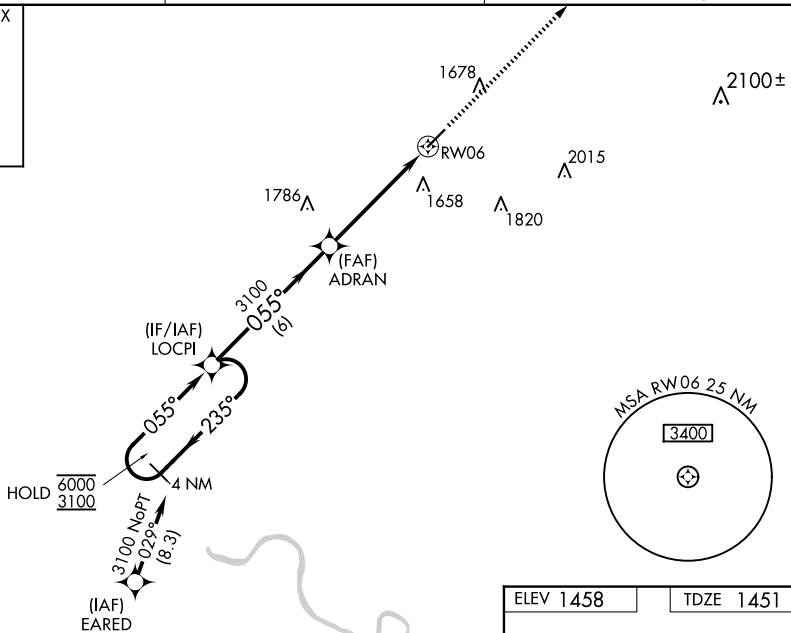
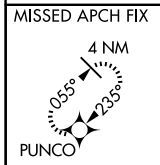
CLARION COUNTY (A.X.Q)

RNP APCH.

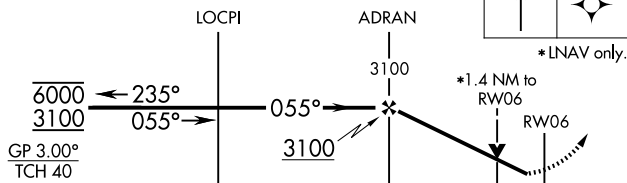
NA Baro-VNAV and VDP NA when using Dubois altimeter setting. Rwy 6 helicopter visibility reduction below $\frac{3}{4}$ NA. For uncompensated Baro-VNAV systems, LNAV/VNAV NA below -17°C or above 54°C. When local altimeter setting not received, use Dubois altimeter setting and increase LPV DA to 1809 feet, LNAV/VNAV DA to 2093 feet, and all visibilities $\frac{3}{8}$ SM; increase all MDAs 120 feet and LNAV visibility Cats C/D $\frac{3}{8}$ SM, and Circling Cat C/D visibility $\frac{1}{2}$ SM.

MISSED APPROACH: Climb to 3500 direct PUNCO and hold.

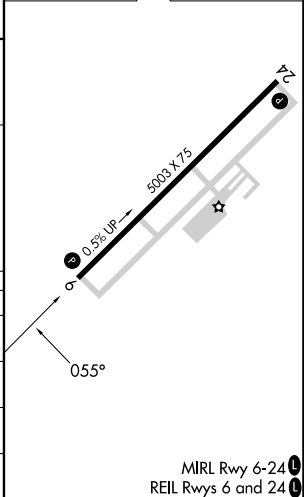
AWOS-3 118.275	CLEVELAND CENTER 126.725 291.65	UNICOM 122.8 (CTAF) 0
--------------------------	---	---------------------------------



4 NM Holding Pattern



ELEV 1458	TDZE 1451
-----------	-----------



CATEGORY	A	B	C	D
LPV DA	1701-1		250 (300-1)	
LNAV/VNAV DA	1985-1½		534 (600-1½)	
LNAV MDA	1920-1	469 (500-1)	1920-1¾	469 (500-1¾)
CIRCLING	1980-1	522 (600-1)	2100-1¾ 642 (700-1¾)	2180-2¼ 722 (800-2¼)

NE-4, 14 MAY 2026 to 11 JUN 2026

NE-4, 14 MAY 2026 to 11 JUN 2026