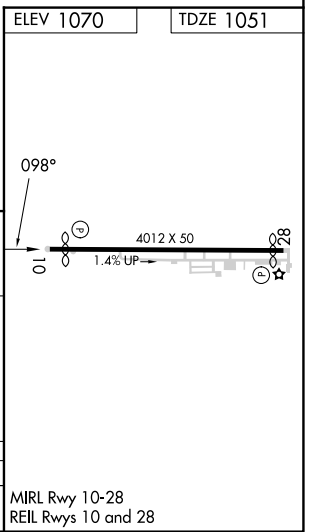
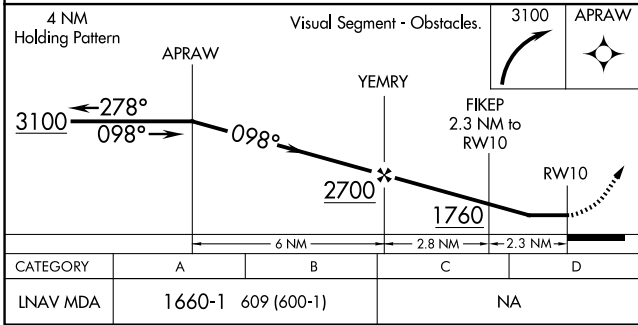
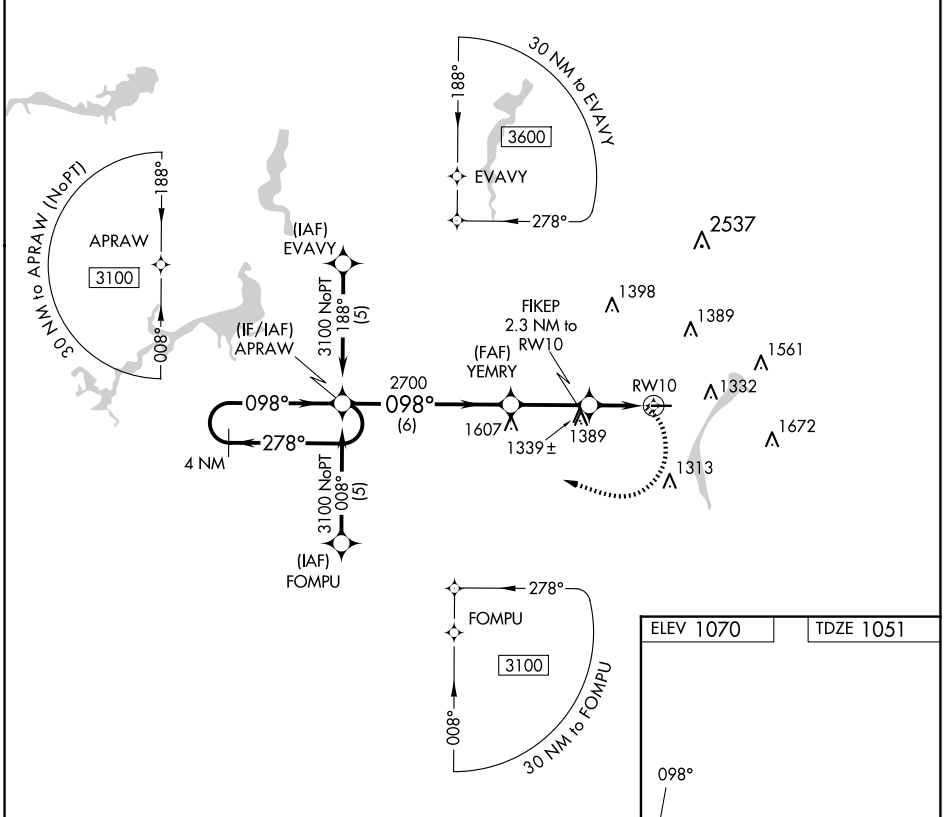


APP CRS	Rwy Idg	<b>3664</b>
<b>098°</b>	TDZE	<b>1051</b>
	Apt Elev	<b>1070</b>

# RNAV (GPS) RWY 10

YOUNGSTOWN ELSER METRO (4G4)

RNP APCH.		MISSED APPROACH: Climbing right turn to 3100 direct APRAW and hold.
<p><b>▽</b> Rwy 10 helicopter visibility reduction below 1 SM NA. Obtain local altimeter setting on CTAF; when not received, use New Castle altimeter setting and increase all MDA 40 feet. Procedure NA at night.</p> <p><b>▲</b> NA</p>		
YOUNGSTOWN APP CON *	CLNC DEL	UNICOM
<b>133.95 322.3</b>	<b>119.25</b>	<b>123.05</b> (CTAF)



CATEGORY	A	B	C	D	MIRL Rwy 10-28 REIL Rwy 10 and 28
LNAV MDA	1660-1	609 (600-1)	NA		

EC-2, 14 MAY 2026 to 11 JUN 2026

EC-2, 14 MAY 2026 to 11 JUN 2026