

WAAS CH 78047 W17A	APP CRS 173°	Rwy Ldg 4001 TDZE 1551 Apt Elev 1551
--	------------------------	---

RNAV (GPS) RWY 17

WATONGA RGNL (JWG)

RNP APCH - GPS.

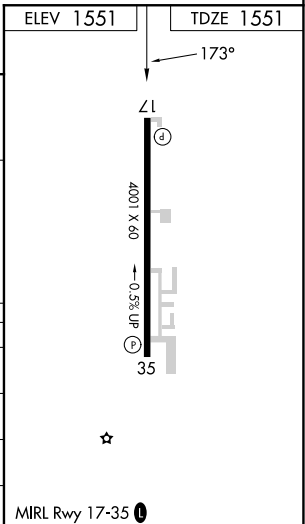
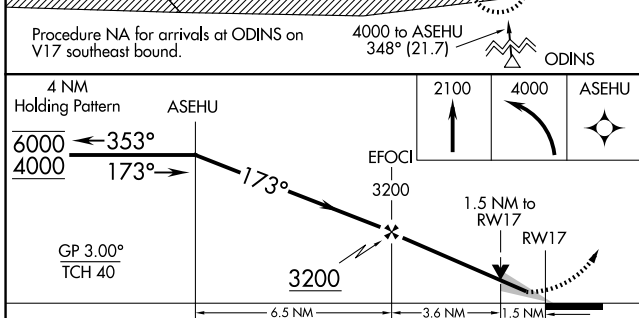
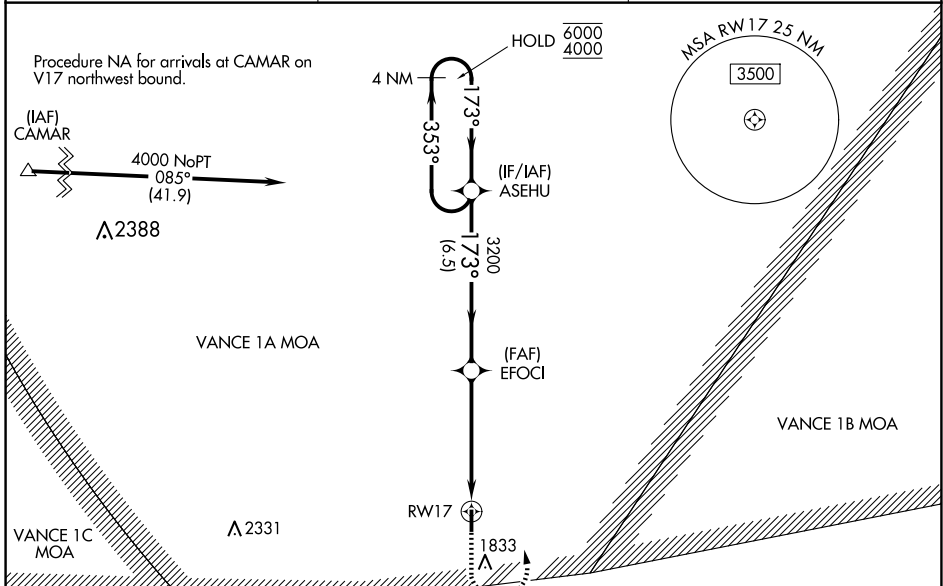
⚠ For uncompensated Baro-VNAV systems, LNAV/VNAV NA below -18°C or above 54°C. Baro-VNAV and VDP NA when using CLK altimeter setting. When local altimeter setting not received, use CLK altimeter setting and increase LPV DA to 1887 feet and all visibilities ¼ SM; increase LNAV/VNAV DA to 2086 feet and all visibilities ¼ SM; increase all MDAs 100 feet and LNAV visibility Cat C ¾ SM and Circling visibility Cat C ½ SM.

MISSED APPROACH: Climb to 2100 then climbing left turn to 4000 direct ASEHU and hold.

AWOS-3
134.175

VANCE APP CON ★
126.75 346.325

UNICOM
122.8 (CTAF) 0



CATEGORY	A	B	C	D
LPV DA	1801-¾	250 (300-¾)		NA
LNAV/VNAV DA	2000-1⅓	449 (500-1⅓)		NA
LNAV MDA	2020-1	469 (500-1)	2020-1⅓ 469 (500-1⅓)	NA
CIRCLING	2040-1 489 (500-1)	2140-1 589 (600-1)	2140-1½ 589 (600-1½)	NA

SC-1, 14 MAY 2026 to 11 JUN 2026

SC-1, 14 MAY 2026 to 11 JUN 2026