

WAAS CH 72647 W35A	APP CRS 353°	Rwy Ldg TDZE 1547 Apt Elev 1551	4001 1547 1551
--	------------------------	---	---

RNAV (GPS) RWY 35

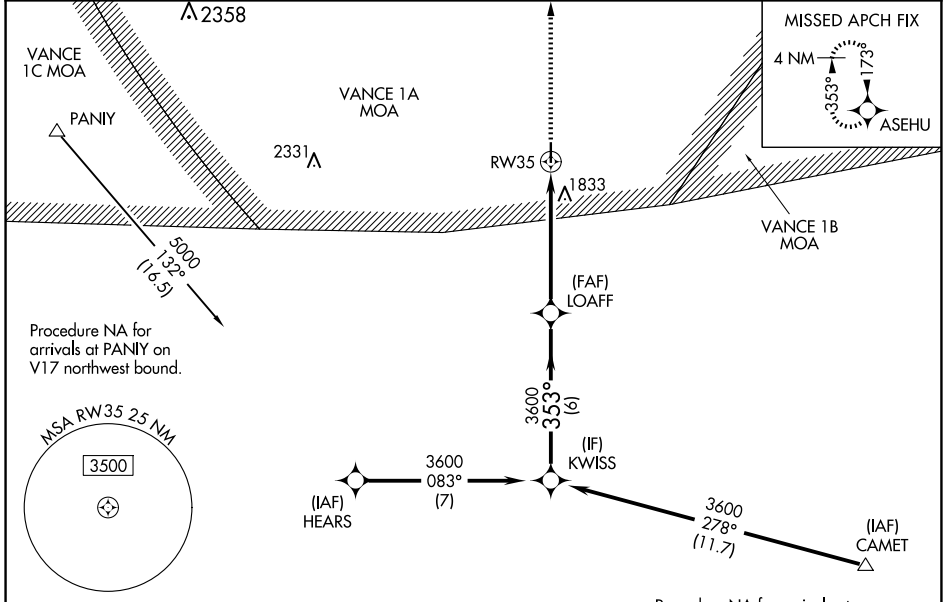
WATONGA RGNL (JWG)

RNP APCH - GPS.

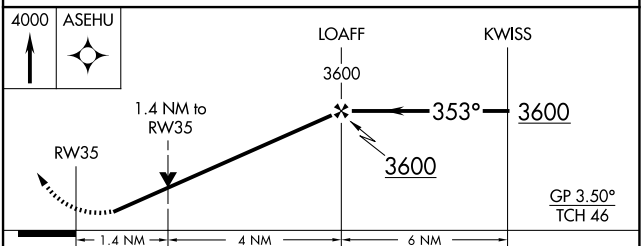
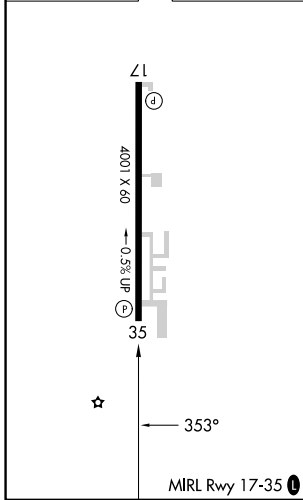
⚠ For uncompensated Baro-VNAV systems, LNAV/VNAV NA below -18°C or above 54°C. Baro-VNAV and VDP NA when using CLK altimeter setting. Rwy 35 helicopter visibility reduction below 3/4 SM NA. When local altimeter setting not received, use CLK altimeter setting and increase LPV DA to 1903 feet and all visibilities 1/2 SM. Increase LNAV/VNAV DA to 2186 feet and all visibilities 1/2 SM. Increase all MDAs 100 feet and LNAV visibility Cat C 1/2 SM, and Circling visibility Cat C 3/8 SM.

MISSED APPROACH:
Climb to 4000 direct
ASEHU and hold.

AWOS-3 134.175	VANCE APP CON ★ 126.75 346.325	UNICOM 122.8 (CTAF) 0
--------------------------	--	---------------------------------



ELEV 1551	TDZE 1547
-----------	-----------



CATEGORY	A	B	C	D
LPV DA	1817-7/8	270 (300-7/8)		NA
LNAV/VNAV DA	2100-15/8	553 (600-15/8)		NA
LNAV MDA	2100-1	553 (600-1)	2100-15/8 (600-15/8)	NA
CIRCLING	2100-1 (549 (600-1))	2140-1 (589 (600-1))	2140-15/8 (589 (600-15/8))	NA

SC-1, 14 MAY 2026 to 11 JUN 2026

SC-1, 14 MAY 2026 to 11 JUN 2026