

WAAS CH <b>73022</b> W32A	APP CRS <b>327°</b>	Rwy Idg <b>4600</b> TDZE <b>1145</b> Apt Elev <b>1145</b>
---------------------------------	------------------------	---

# RNAV (GPS) RWY 32

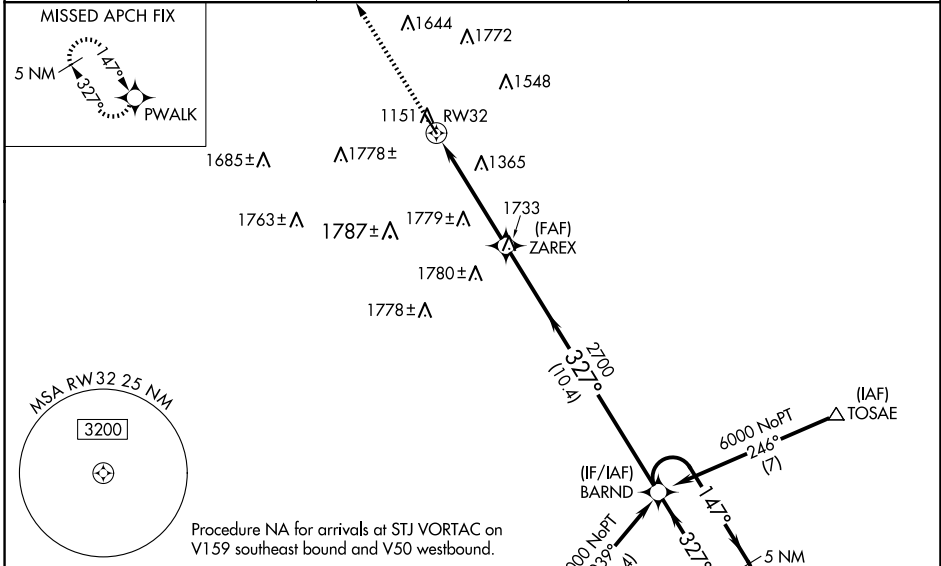
NORTHWEST MISSOURI RGNL (EVU)

RNP APCH - GPS.

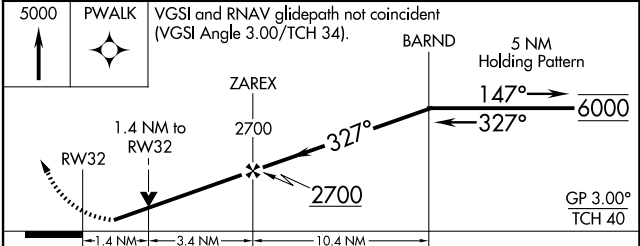
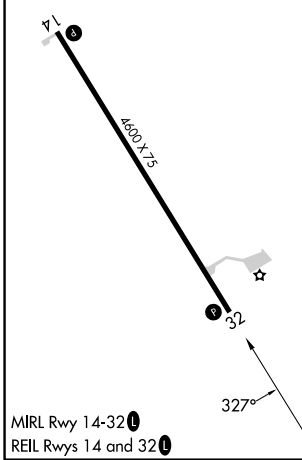
**NA** Circling NA east of Rwy 14-32. For uncompensated Baro-VNAV systems, LNAV/VNAV NA below -17°C or above 54°C. Rwy 32 helicopter visibility reduction below 3/4 SM NA. When local altimeter setting not received, use St. Joseph altimeter setting; increase LPV DA to 1520 feet, LNAV/VNAV DA to 1653 feet and LNAV/VNAV visibility all Cats 1/4 SM; increase all MDAs 140 feet and LNAV visibility Cat C 3/8 SM. Baro-VNAV and VDP NA when using St. Joseph altimeter setting.

**MISSED APPROACH:** Climb to 5000 direct PWALK and hold, continue climb-in-hold to 5000.

AWOS-3PT <b>118.225</b>	MINNEAPOLIS CENTER <b>119.6 290.4</b>	UNICOM <b>122.8 (CTAF) 1</b>
----------------------------	--	---------------------------------



ELEV 1145	TDZE 1145
-----------	-----------



CATEGORY	A	B	C	D
LPV DA	1395-1 250 (300-1)			NA
LNAV/VNAV DA	1528-1 1/8 383 (400-1 1/8)			NA
LNAV MDA	1620-1	475 (500-1)	1620-1 3/8 475 (500-1 3/8)	NA
CIRCLING	1620-1	475 (500-1)	2120-3 975 (1000-3)	NA

NC-3, 14 MAY 2026 to 11 JUN 2026

NC-3, 14 MAY 2026 to 11 JUN 2026