

WAAS CH 78241 W32A	APP CRS 318°	Rwy Ldg TDZE 24 Apt Elev 24	4099
--	------------------------	---	-------------

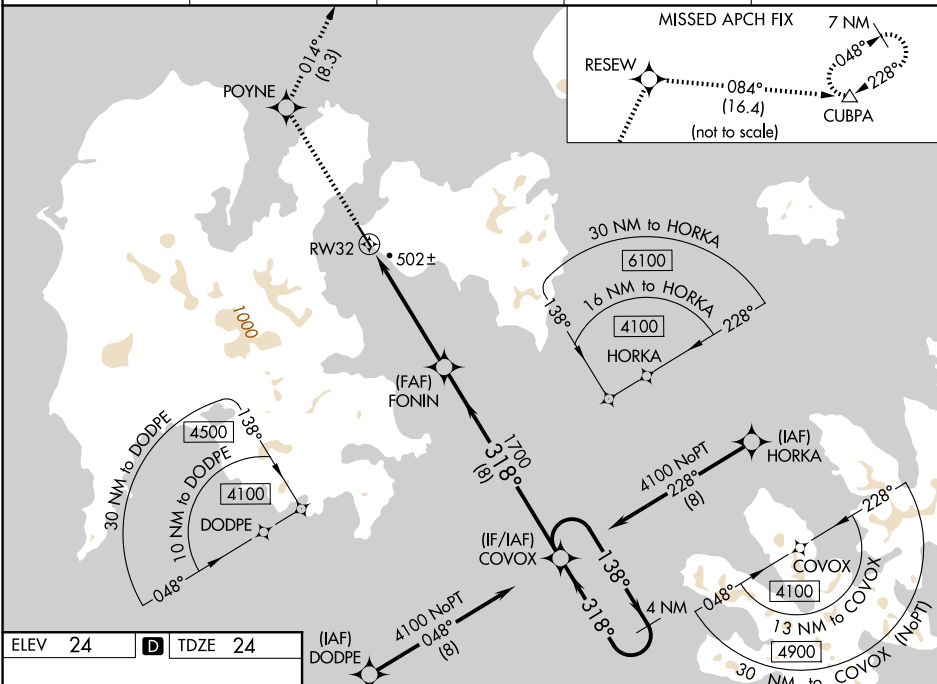
RNAV (GPS) RWY 32

SAND POINT (SDP) (PASD)

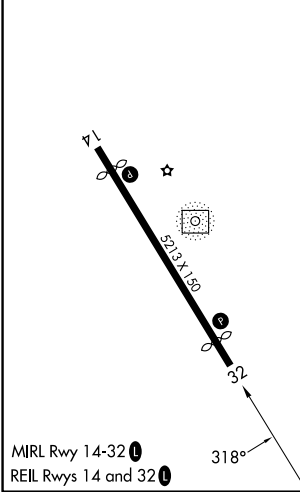
⚠ For uncompensated Baro-VNAV systems, LNAV/VNAV NA below -20°C (-4°F) or above 54°C (130°F). When local altimeter setting not received, procedure NA. Circling NA northeast of Rwy 14-32. DME/DME RNP-0.3 NA.

MISSED APPROACH: Climb to 7000 direct POYNE and on track 014° to RESEW and on track 084° to CUBPA and hold, continue climb-in-hold to 7000.

AWOS-3P 134.85	ANCHORAGE CENTER 125.35 346.3	COLD BAY RADIO 122.3	UNICOM 122.8	CTAF 122.3 ①
--------------------------	---	--------------------------------	------------------------	-------------------------------



ELEV 24	D	TDZE 24
----------------	----------	----------------



7000	POYNE	tr 014°	RESEW	tr 084°	CUBPA	VGSI and RNAV glidepath not coincident (VGSI Angle 3.60/TCH 36)
↑	✧		✧		△	COVOX 4 NM Holding Pattern
*LNAV only						
					FONIN 1700	1700
						4100
						GP 3.00° TCH 36

CATEGORY	A	B	C	D
LPV DA		566-1½	542 (600-1½)	
LNAV/VNAV DA		859-2½	835 (900-2½)	
LNAV MDA	760-1	736 (800-1)	760-2	736 (800-2)
CIRCLING	760-1	736 (800-1)	1520-3 1496 (1500-3)	NA

AK, 14 MAY 2026 to 09 JUL 2026

AK, 14 MAY 2026 to 09 JUL 2026