

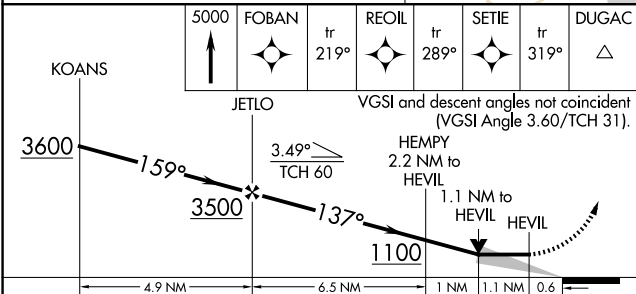
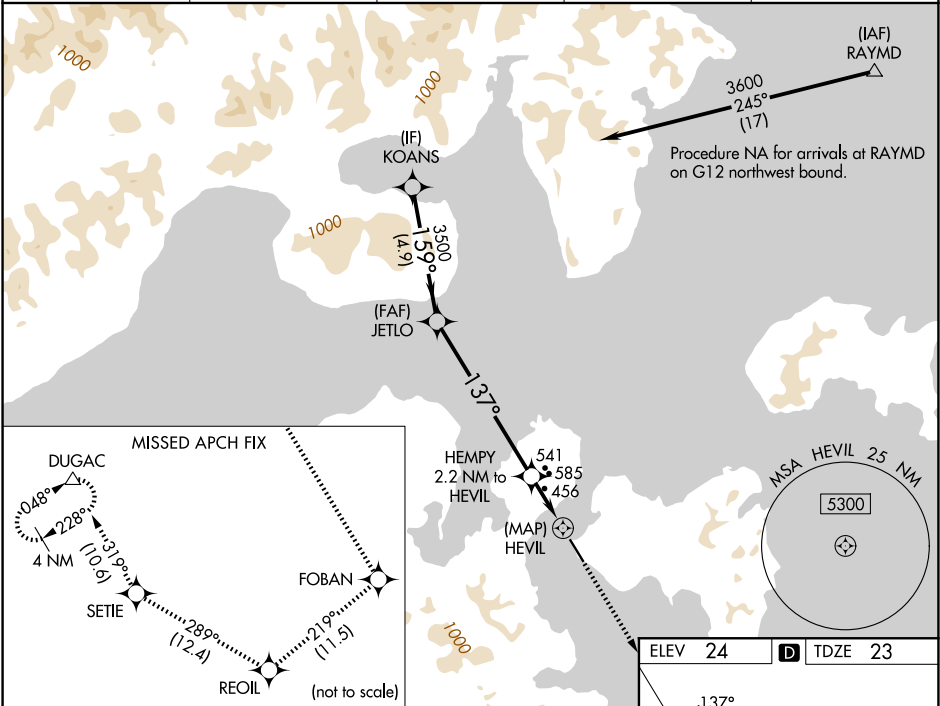
WAAS CH <b>86844</b> <b>W14B</b>	APP CRS <b>137°</b>	Rwy Ldg TDZE Apt Elev	<b>4099</b> <b>23</b> <b>24</b>
--	------------------------	-----------------------------	---------------------------------------

# RNAV (GPS) Y RWY 14

SAND POINT (SDP) (PASD)

RNP APCH-GPS.		MISSED APPROACH: Climb to 5000 on the RNAV missed approach route to DUGAC and hold.
Circling NA northeast of Rwy 14-32.		

AWOS-3P <b>134.85</b>	ANCHORAGE CENTER <b>125.35 346.3</b>	COLD BAY RADIO <b>122.3</b>	UNICOM <b>122.8</b>	CTAF <b>122.3 0</b>
--------------------------	---	--------------------------------	------------------------	------------------------



5000	↑	FOBAN	tr	219°	REOIL	tr	289°	SETIE	tr	319°	DUGAC	△
VGSIs and descent angles not coincident (VGSIs Angle 3.60/TCH 31).												
4.9 NM	6.5 NM	1 NM	1.1 NM	0.6								
CATEGORY	A	B	C	D								
LP MDA	720-1	697 (700-1)	720-2	697 (700-2)								
LNAV MDA	840-1 817 (900-1)	840-1¼ 817 (900-1¼)	840-2½	817 (900-2½)								
CIRCLING	840-1¼	816 (900-1¼)	1580-3 1556 (1600-3)	2240-3 2216 (2300-3)								

ELEV 24	<b>D</b> TDZE 23
---------	------------------

MIRL Rwy 14-32 **0**  
REIL Rws 14 and 32 **0**

AK, 14 MAY 2026 to 09 JUL 2026

AK, 14 MAY 2026 to 09 JUL 2026