

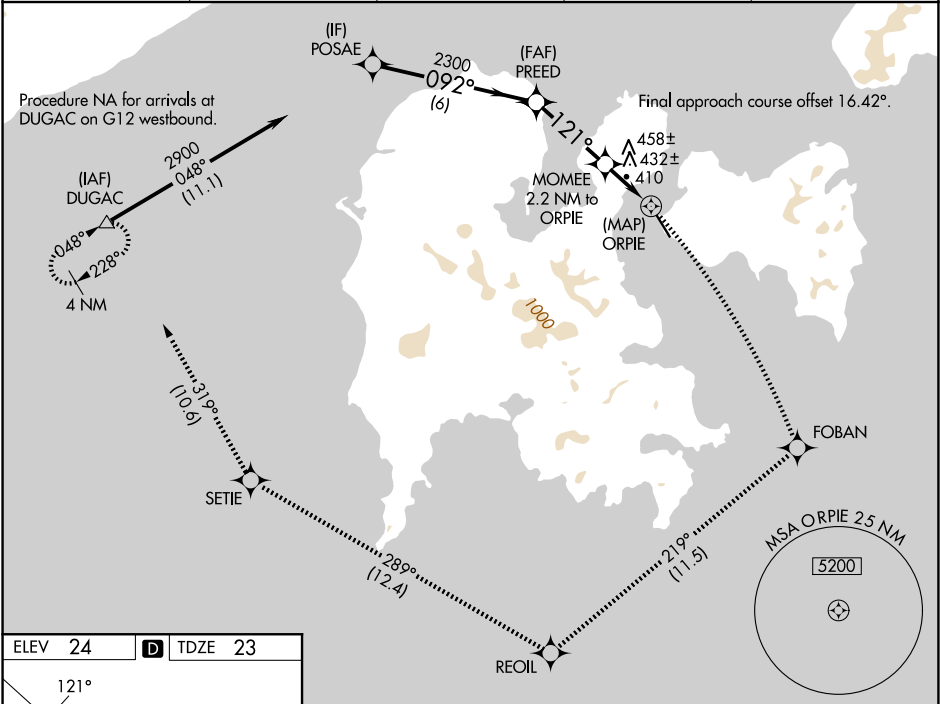
WAAS CH 56245 W14A	APP CRS 121°	Rwy Ldg 4099 TDZE 23 Apt Elev 24
--	------------------------	---

RNAV (GPS) Z RWY 14

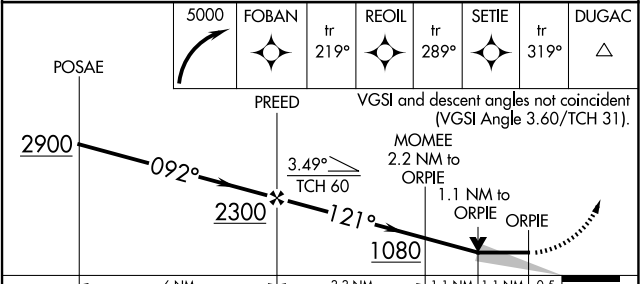
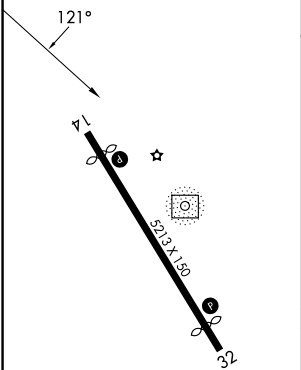
SAND POINT (SDP) (PASD)

RNP APCH-GPS.	MISSED APPROACH: Climbing right turn to 5000 on the RNAV missed approach route to DUGAC and hold.
Circling NA northeast of Rwy 14-32.	

AWOS-3P 134.85	ANCHORAGE CENTER 125.35 346.3	COLD BAY RADIO 122.3	UNICOM 122.8	CTAF 122.3
--------------------------	---	--------------------------------	------------------------	----------------------



ELEV 24	D	TDZE 23
---------	----------	---------



CATEGORY	A	B	C	D
LP MDA	660-1	637 (700-1)	660-1¾	637 (700-1¾)
LNAV MDA	820-1 797 (800-1)	820-1¼ 797 (800-1¼)	820-2½	797 (800-2½)
CIRCLING	820-1 796 (800-1)	820-1¼ 796 (800-1¼)	1580-3 1556 (1600-3)	2240-3 2216 (2300-3)

MIRL Rwy 14-32
REIL Rwy 14 and 32