

APP CRS	Rwy Ldg	<b>2881</b>
<b>136°</b>	TDZE	<b>1233</b>
	Apt Elev	<b>1233</b>

# RNAV (GPS) RWY 14

SHELL LAKE MUNI (SSQ)

RNP APCH.

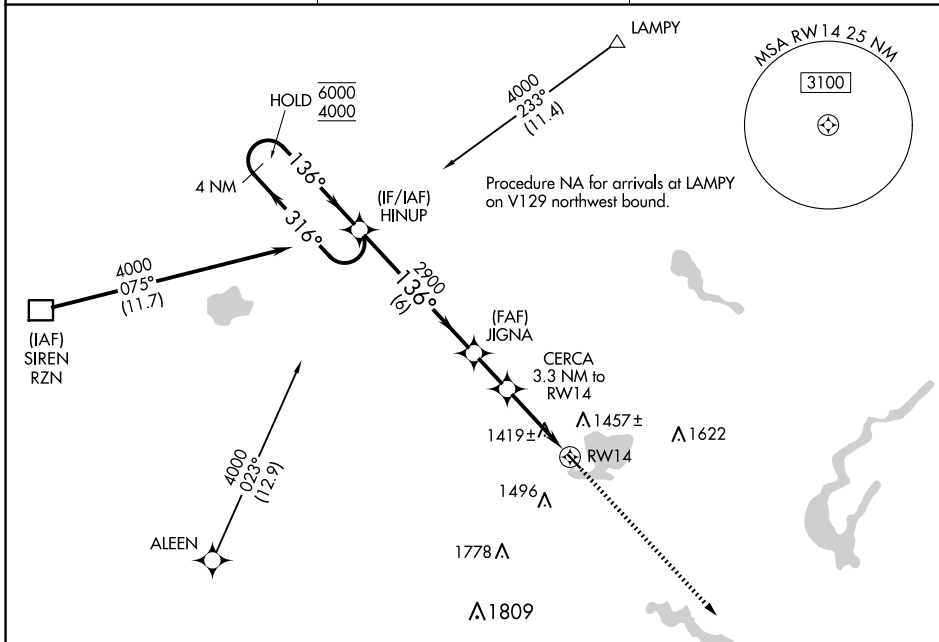
**V** Procedure NA at night. Rwy 14 helicopter visibility reduction below 1 SM NA.  
**Δ** NA Use Cumberland altimeter setting.

MISSED APPROACH: Climb to 4000 direct QESCA and hold.

UBE AWOS-3PT  
**119.175**

MINNEAPOLIS CENTER  
**126.45 276.4**

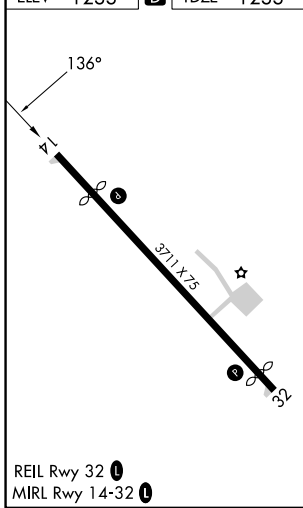
UNICOM  
**122.8 (CTAF)**



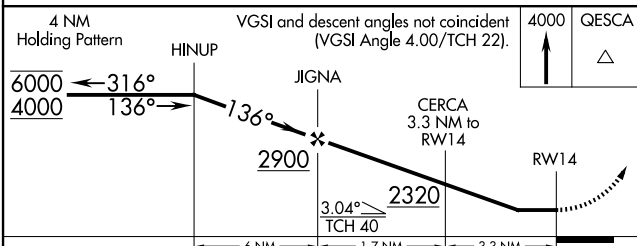
EC-3, 14 MAY 2026 to 11 JUN 2026

EC-3, 14 MAY 2026 to 11 JUN 2026

ELEV	1233	<b>D</b>	TDZE	1233
------	------	----------	------	------



REIL Rwy 32 **Q**  
 MIRL Rwy 14-32 **Q**



CATEGORY	A	B	C	D
LNAV MDA	1740-1	507 (600-1)	1740-1½	507 (600-1½)
CIRCLING	1840-1	607 (700-1)	1840-1¾ 607 (700-1¾)	2020-2½ 787 (800-2½)