

APP CRS	Rwy Ldg	3500
316°	TDZE	1233
	Apt Elev	1233

RNAV (GPS) RWY 32

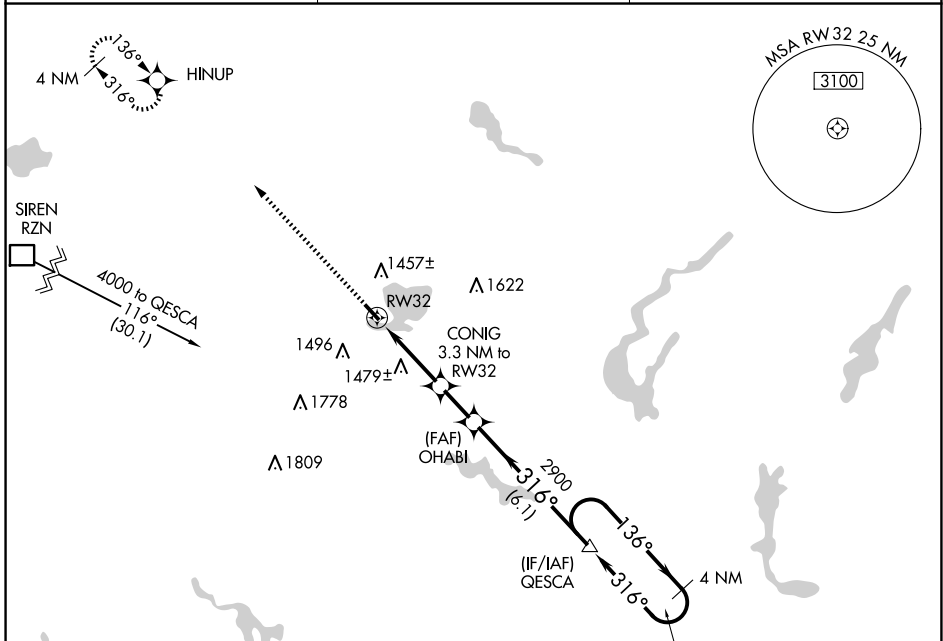
SHELL LAKE MUNI (SSQ)

RNP APCH.

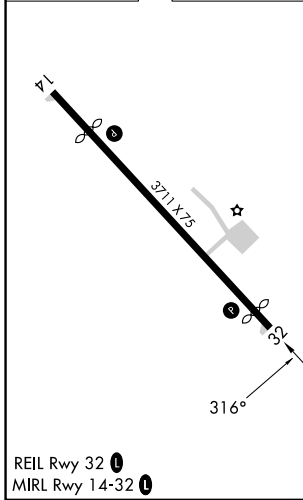
▼ Procedure NA at night. Rwy 32 helicopter visibility reduction below 1 SM NA.
▲ NA Use Cumberland altimeter setting.

MISSED APPROACH: Climb to 4000 direct HINUP and hold.

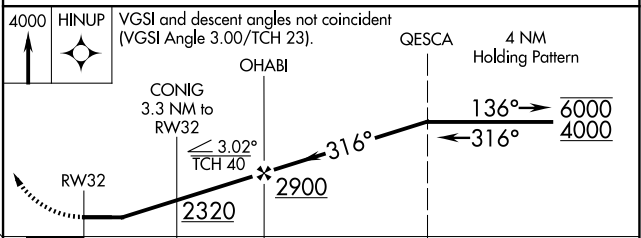
UBE AWOS-3PT 119.175	MINNEAPOLIS CENTER 126.45 276.4	UNICOM 122.8 (CTAF) 0
--------------------------------	---	---------------------------------



ELEV 1233	D	TDZE 1233
-----------	----------	-----------



4000 HINUP	VGSI and descent angles not coincident (VGSI Angle 3.00/TCH 23).		QESCA	4 NM Holding Pattern
	CONIG 3.3 NM to RW32	OHABI		
	RW32			
	3.3 NM	1.8 NM	6.1 NM	



CATEGORY	A	B	C	D
LNAV MDA	1800-1 567 (600-1)		1800-1½ 567 (600-1½)	1800-1¾ 567 (600-1¾)
CIRCLING	1840-1 607 (700-1)		1840-1¾ 607 (700-1¾)	2020-2½ 787 (800-2½)

EC-3, 14 MAY 2026 to 11 JUN 2026

EC-3, 14 MAY 2026 to 11 JUN 2026