

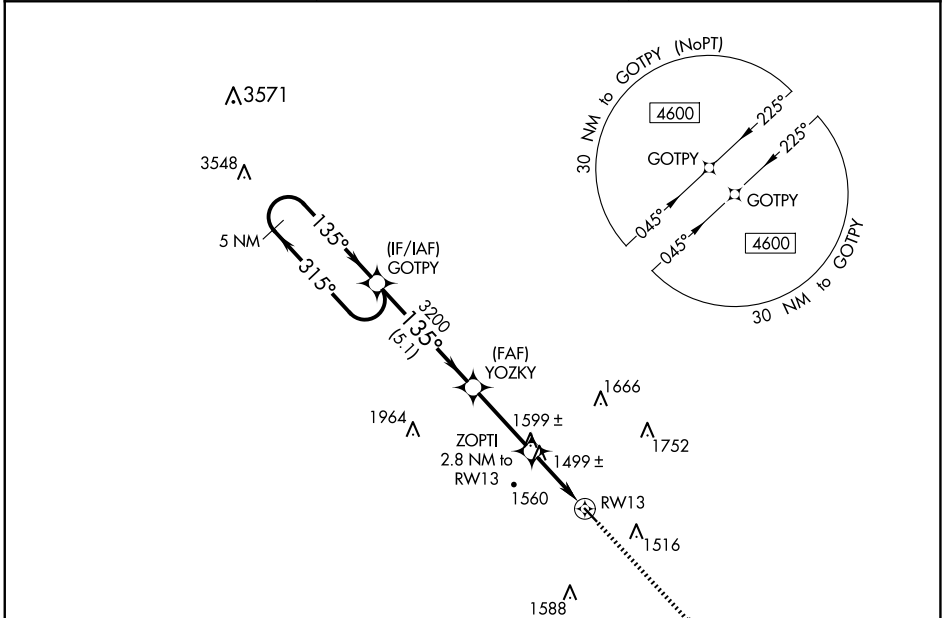
APP CRS	Rwy Idg	<b>3634</b>
<b>135°</b>	TDZE	<b>1277</b>
	Apt Elev	<b>1311</b>

# RNAV (GPS) RWY 13

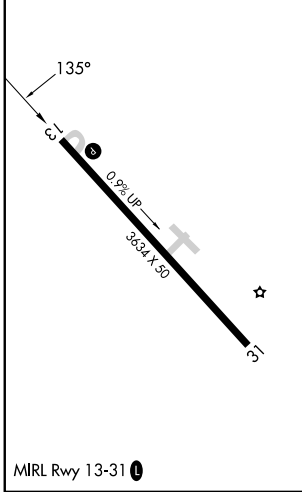
AVA BILL MARTIN MEML (AOV)

RNP APCH.	<p>Procedure NA at night. Use Branson altimeter setting, if not received use Springfield Branson Natl altimeter setting and increase all MDA 20 feet. Rwy 13 helicopter visibility reduction below 1 SM NA.</p>	<p>MISSED APPROACH: Climb to 3500 direct GAHSU and hold.</p>
<p><b>NA</b></p>		

BBG AWOS-3 <b>124.625</b>	SPRINGFIELD APP CON <b>126.35</b>	UNICOM <b>122.7 (CTAF) 0</b>
------------------------------	--------------------------------------	---------------------------------



ELEV 1311	TDZE 1277
-----------	-----------



5 NM Holding Pattern	GOTPY	YOZKY	ZOPTI 2.8 NM to RWY 13	RWY 13
4600	315°	135°	3200	2200
		7.35°	3.00° TCH 40	
	5.1 NM	3.1 NM	2.8 NM	
CATEGORY	A	B	C	D
LNAV MDA	1840-1	563 (600-1)		NA

NC-3, 14 MAY 2026 to 11 JUN 2026

NC-3, 14 MAY 2026 to 11 JUN 2026