

APP CRS	Rwy Idg	3634
315°	TDZE	1311
	Apt Elev	1311

RNAV (GPS) RWY 31

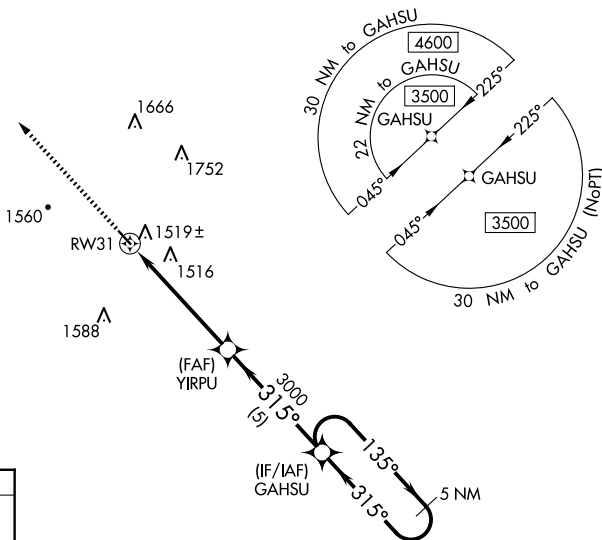
AVA BILL MARTIN MEML (A0V)

RNP APCH.		MISSED APPROACH: Climb to 4600 direct GOTPY and hold, continue climb-in-hold to 4600.
<p>▼ Procedure NA at night. Rwy 31 helicopter visibility reduction below 1 SM NA.</p> <p>▲ NA Use Branson altimeter setting, if not received use Springfield Branson Natl altimeter setting and increase all MDA 20 feet.</p>		
BBG AWOS-3 124.625	SPRINGFIELD APP CON 126.35	UNICOM 122.7 (CTAF) 0

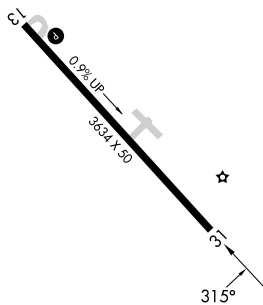
▲ 3548



1964 ▲



ELEV 1311	TDZE 1311
-----------	-----------



4600	GOTPY	Visual Segment - Obstacles.		GAHSU	5 NM Holding Pattern
↑	✧	RW31	YIRPU	GAHSU	3500
		5.2 NM	5 NM	135° →	← 315°
CATEGORY	A	B	C	D	
LNAV MDA	1860-1	549 (600-1)			NA

NC-3, 14 MAY 2026 to 11 JUN 2026

NC-3, 14 MAY 2026 to 11 JUN 2026

MIRL Rwy 13-31 0