

WAAS CH 63009 W24A	APP CRS 240°	Rwy Ldg TDZE Apt Elev	5501 523 526
--	------------------------	-----------------------------	---

RNAV (GPS) RWY 24

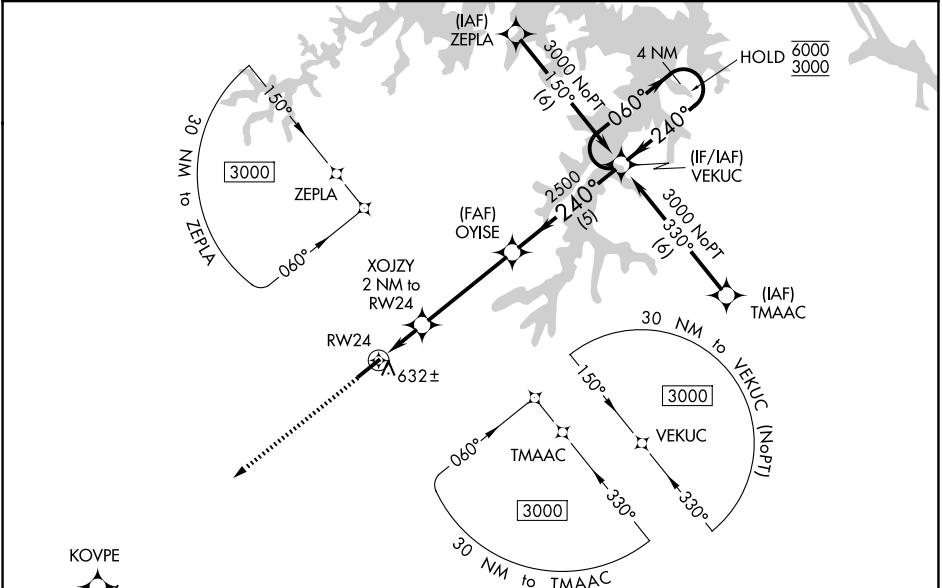
HENDERSON/OXFORD (HNZ)

RNP APCH - GPS.

▼ For uncompensated Baro-VNAV systems, LNAV/VNAV NA below -16°C or above 54°C. Baro-VNAV and VDP NA when using Roxboro altimeter setting. Rwy 24 helicopter visibility reduction below 3/4 SM NA. When local altimeter setting not received, use Roxboro altimeter setting and increase LPV DA to 837 feet and all visibilities 1/8 SM; increase LNAV/VNAV DA to 877 feet and all visibilities 1/8 SM; increase all MDAs 80 feet and LNAV visibility Cat C/D 3/8 SM, and Circling visibility Cat C/D 1/4 SM.

MISSED APPROACH:
Climb to 3000 direct KOVPE and hold.

AWOS-3 118.625	RALEIGH APP CON 132.35 256.9	UNICOM 122.8(CTAF)
--------------------------	--	------------------------------

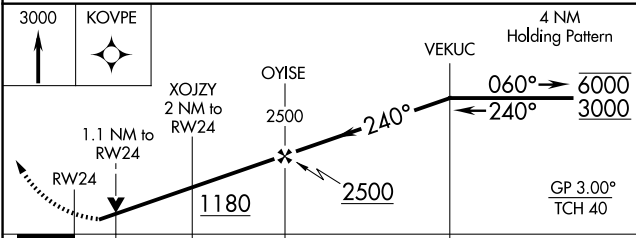


SE-2, 14 MAY 2026 to 11 JUN 2026

SE-2, 14 MAY 2026 to 11 JUN 2026



ELEV 526	TDZE 523
----------	----------



CATEGORY	A	B	C	D
LPV DA		773-3/4	250 (300-3/4)	
LNAV/VNAV DA		813-7/8	290 (300-7/8)	
LNAV MDA		900-1	377 (400-1)	
CIRCLING	960-1 434 (500-1)	980-1 454 (500-1)	1100-1 1/2 574 (600-1 1/2)	1280-2 1/2 754 (800-2 1/2)

