

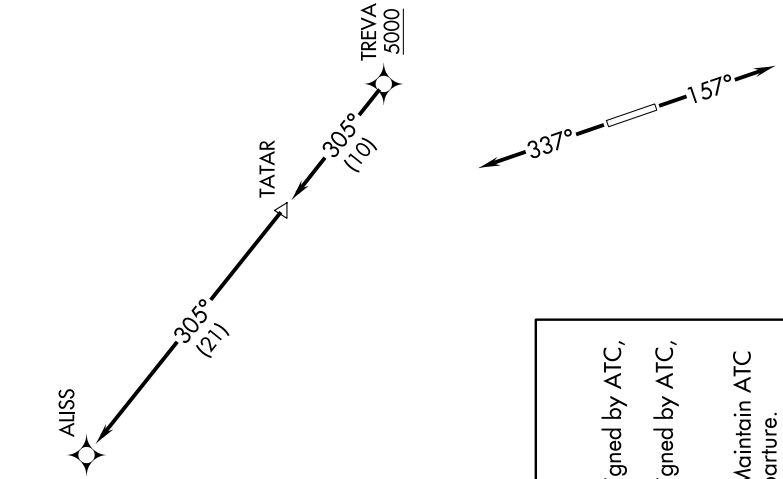
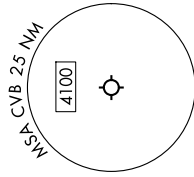
ALISS SEVEN DEPARTURE (RNAV)

SC-3, 14 MAY 2026 to 11 JUN 2026

SAN ANTONIO DEP CON
118.05 353.5

RNAV 1 - DME/DME/IRU or GPS.
RADAR required for non-GPS equipped aircraft.
RADAR required.

**TOP ALTITUDE:
ASSIGNED BY ATC**



TAKEOFF MINIMUMS
Rwys 16, 34: Standard.

▼ DEPARTURE ROUTE DESCRIPTION

TAKEOFF RUNWAY 16: Climb on heading 157° or as assigned by ATC, for vectors to TREVA, thence. . .

TAKEOFF RUNWAY 34: Climb on heading 337° or as assigned by ATC, for vectors to TREVA, thence. . .

. . . on track 305° to TATAR, then on track 305° to ALISS. Maintain ATC assigned altitude. Expect filed altitude 10 minutes after departure.

NOTE: Chart not to scale.

SC-3, 14 MAY 2026 to 11 JUN 2026

ALISS SEVEN DEPARTURE (RNAV)