

(TJANO2.TJANO) 25219

AL-6552 (FAA)

CASTROVILLE MUNI (CVB)
CASTROVILLE, TEXAS

TJANO TWO DEPARTURE (RNAV)

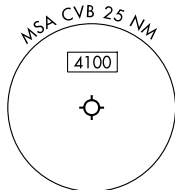
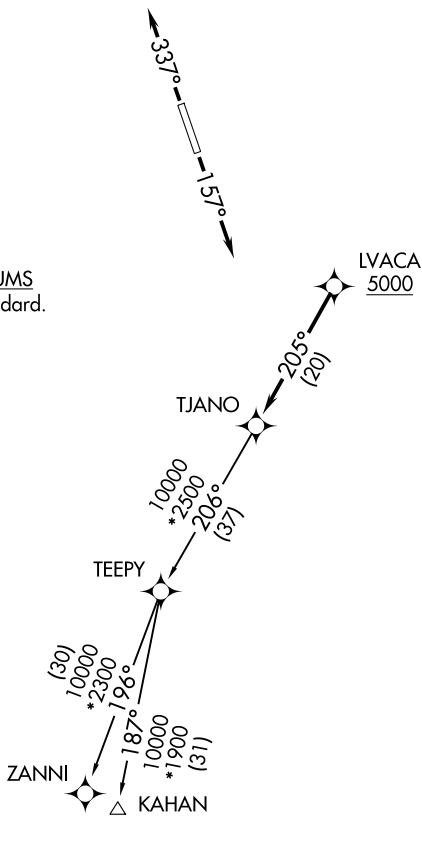
SAN ANTONIO DEP CON
118.05 353.5

RNAV 1 - DME/DME IRU or GPS.

RADAR required for non-GPS equipped aircraft.
RADAR required.

**TOP ALTITUDE:
ASSIGNED BY ATC**

TAKEOFF MINIMUMS
Rwys 16, 34: Standard.



NOTE: Chart not to scale.



DEPARTURE ROUTE DESCRIPTION

TAKEOFF RUNWAY 16: Climb on heading 157° or as assigned by ATC, for vectors to LVACA, thence. . .

TAKEOFF RUNWAY 34: Climb on heading 337° or as assigned by ATC, for vectors to LVACA, thence. . .

. . .on track 205° to TJANO, then on transition. Maintain ATC assigned altitude. Expect filed altitude 10 minutes after departure.

KAHAN TRANSITION (TJANO2.KAHAN)

ZANNI TRANSITION (TJANO2.ZANNI)

TJANO TWO DEPARTURE (RNAV)
(TJANO2.TJANO) 07AUG25

CASTROVILLE, TEXAS
CASTROVILLE MUNI (CVB)

SC-3, 14 MAY 2026 to 11 JUN 2026

SC-3, 14 MAY 2026 to 11 JUN 2026