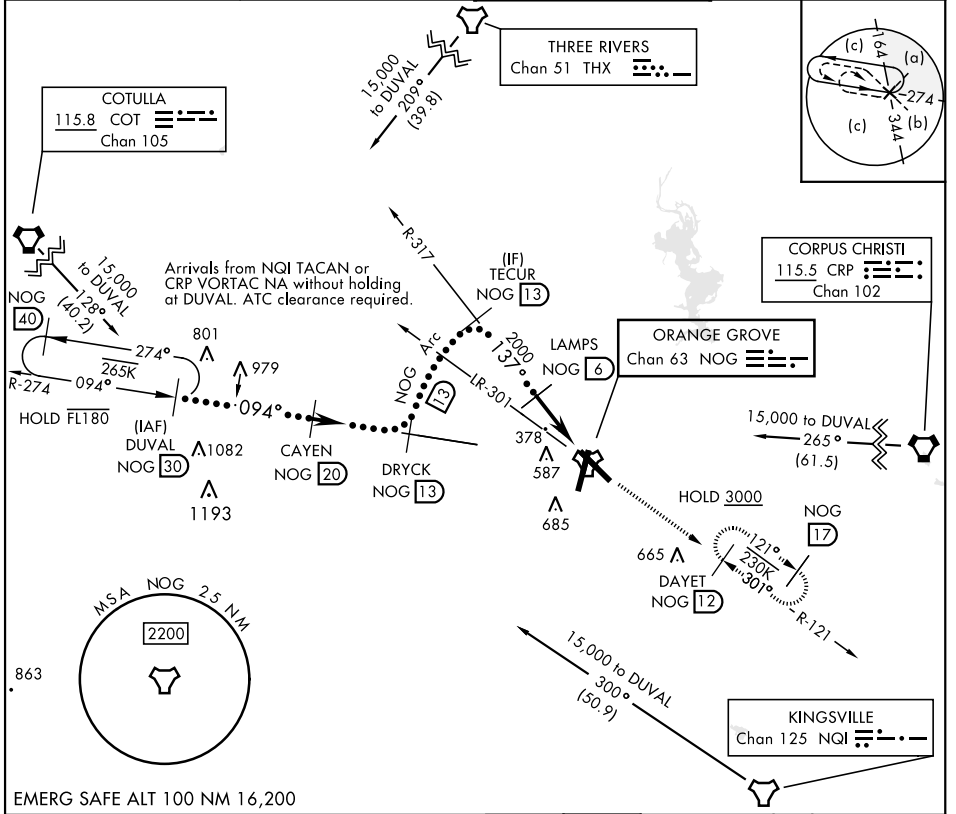


# HI-TACAN Y RWY 13

TACAN Chan <b>63</b>	APCH CRS <b>137°</b>	Rwy Idg TDZE Arpt Elev	<b>8001</b> <b>257</b> <b>257</b>	[USN]	ORANGE GROVE NALF (KNOG)
-------------------------	-------------------------	------------------------------	---	-------	--------------------------

**MISSED APPROACH:** Climb to 700, then climb to 3000 intercept NOG TACAN R-121 to DAYET and hold.

ATIS ★ <b>254.35</b>	KINGSVILLE APP CON <b>119.90 290.45</b>	TOWER ★ <b>128.4 281.425</b>	GND CON <b>229.4</b>
-------------------------	--	---------------------------------	-------------------------



EMERG SAFE ALT 100 NM 16,200

DUVAL NOG 30	CAYEN NOG 20	DRYCK NOG 13	TECUR NOG 13	LAMPS NOG 6	NOG 1.8	NOG TACAN	DAYET NOG 12	ELEV 257	TDZE 257
* 15,000							3000		
* Or as assigned							8000		
							3000 NOG 13		
							2000		
							3.04° TCH 50		
							4.8 NM		
							0.5		
CATEGORY	C	D	E						
S-13	640-1 1/8	383	(400-1 1/8)						
CIRCLING	920-1 3/4 663 (700-1 3/4)	1000-2 1/2 743 (800-2 1/2)	1000-2 3/4 743 (800-2 3/4)						

MIRL all rwys

# HI-TACAN Y RWY 13

SC-3, 14 MAY 2026 to 11 JUN 2026

SC-3, 14 MAY 2026 to 11 JUN 2026