

ORANGE GROVE, TEXAS

# ILS X or LOC X RWY 13

LOC/DME I-NOG <b>110.5</b> Chan <b>42</b>	APCH CRS <b>130°</b>	Rwy Ildg TDZE Arprt Elev <b>8001</b> <b>257</b> <b>257</b>
---	-------------------------	---

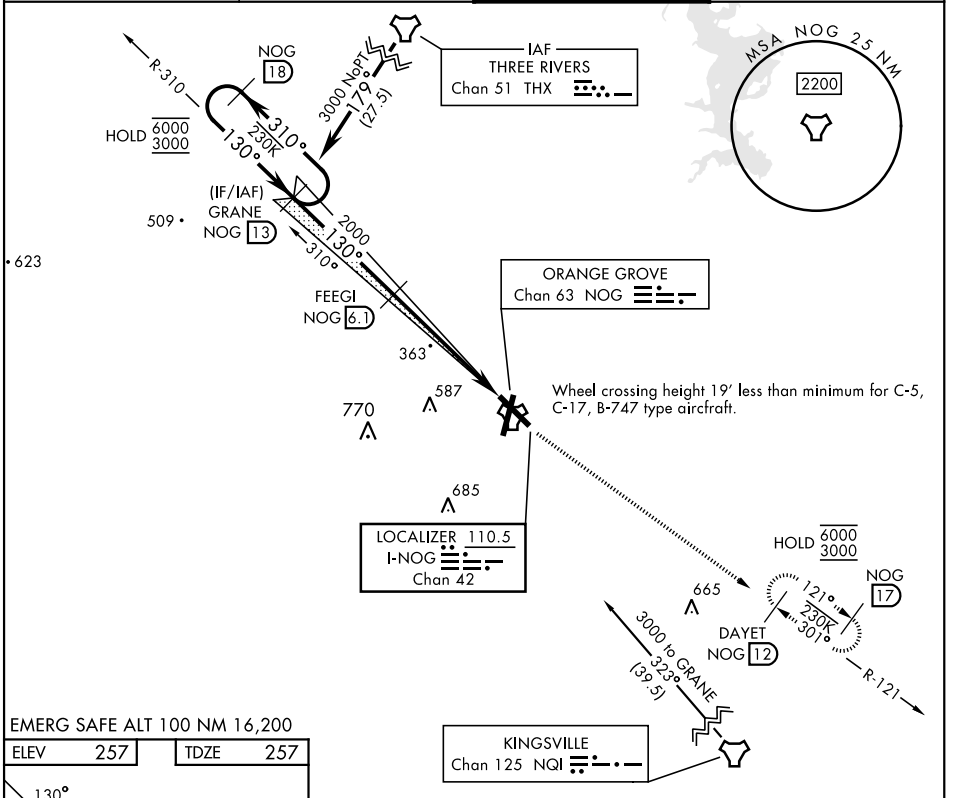
[USN]

ORANGE GROVE NALF (KNOG)

TACAN required

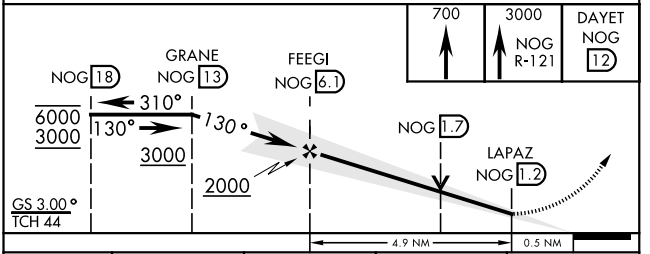
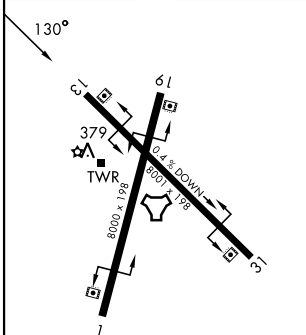
MISSED APPROACH: Climb to 700 then climb to 3000 intercept NOG TACAN R-121 to DAYET and hold.

ATIS ★ <b>254.35</b>	KINGSVILLE APP CON <b>119.90 290.45</b>	TOWER ★ <b>128.4 281.425</b>	GND CON <b>229.4</b>
-------------------------	--	---------------------------------	-------------------------



EMERG SAFE ALT 100 NM 16,200

ELEV 257	TDZE 257
----------	----------



CATEGORY	A	B	C	D
S-ILS 13		457-1	200	(200-1)
S-LOC 13		620-1	363	(400-1)
CIRCLING	720-1	463 (500-1)	920-1¾ 663 (700-1¾)	1000-2½ 743 (800-2½)

ORANGE GROVE, TEXAS

27°54'N-98°03'W

ORANGE GROVE NALF (KNOG)

Amdt 1 13JUN24

# ILS X or LOC X RWY 13

SC-3, 14 MAY 2026 to 11 JUN 2026

SC-3, 14 MAY 2026 to 11 JUN 2026