

ORANGE GROVE, TEXAS

ILS Z or LOC Z RWY 13

LOC/DME I-NOG 110.5 Chan 42	APCH CRS 130°	Rwy Idg TDZE Arprt Elev 8001 257 257
---	-------------------------	--

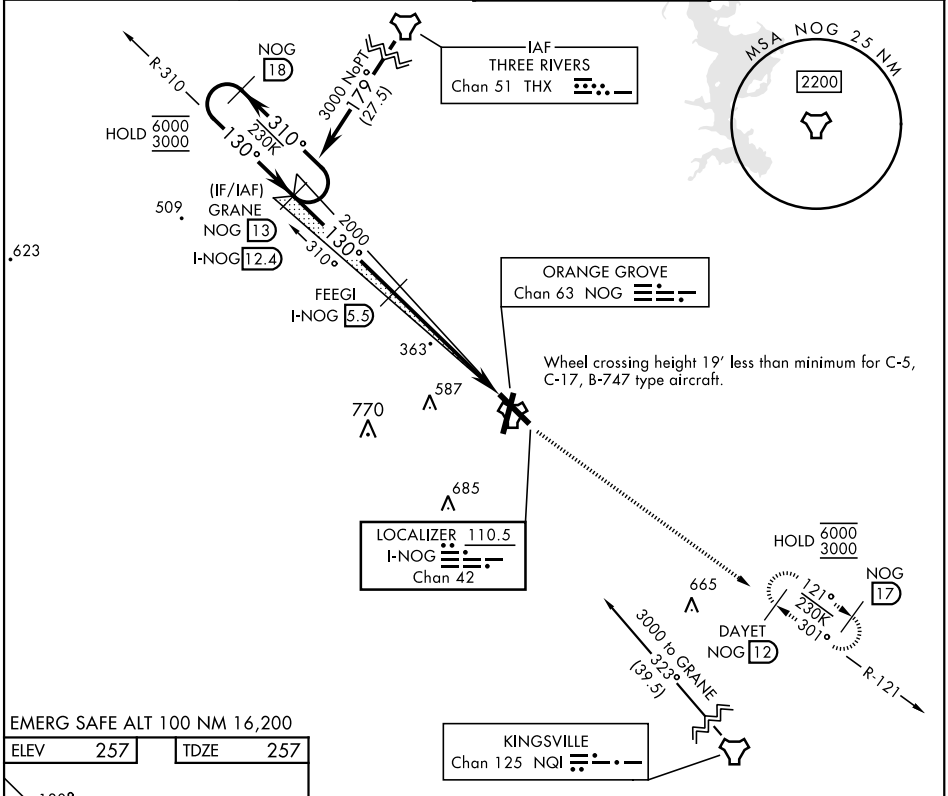
[USN]

ORANGE GROVE NALF (KNOG)

TACAN, DME required.

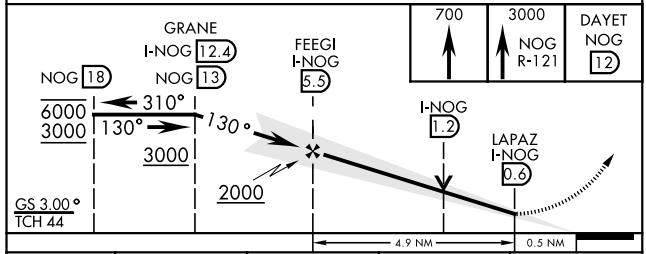
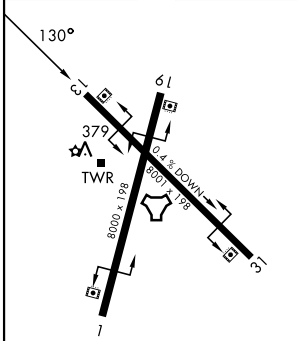
MISSED APPROACH: Climb to 700, then climb to 3000 intercept NOG TACAN R-121 to DAYET and hold.

ATIS ★ 254.35	KINGSVILLE APP CON 119.90 290.45	TOWER ★ 128.4 281.425	GND CON 229.4
-------------------------	--	---------------------------------	-------------------------



EMERG SAFE ALT 100 NM 16,200

ELEV 257	TDZE 257
----------	----------



CATEGORY	A	B	C	D
S-ILS 13		457-1	200 (200-1)	
S-LOC 13		620-1	363 (400-1)	
CIRCLING	720-1	463 (500-1)	920-1 ³ / ₄ 663 (700-1 ³ / ₄)	1000-2 ¹ / ₂ 743 (800-2 ¹ / ₂)

ORANGE GROVE, TEXAS
Amdt 1 13JUN24

27°54'N-98°03'W

ORANGE GROVE NALF (KNOG)

ILS Z or LOC Z RWY 13

SC-3, 14 MAY 2026 to 11 JUN 2026

SC-3, 14 MAY 2026 to 11 JUN 2026