

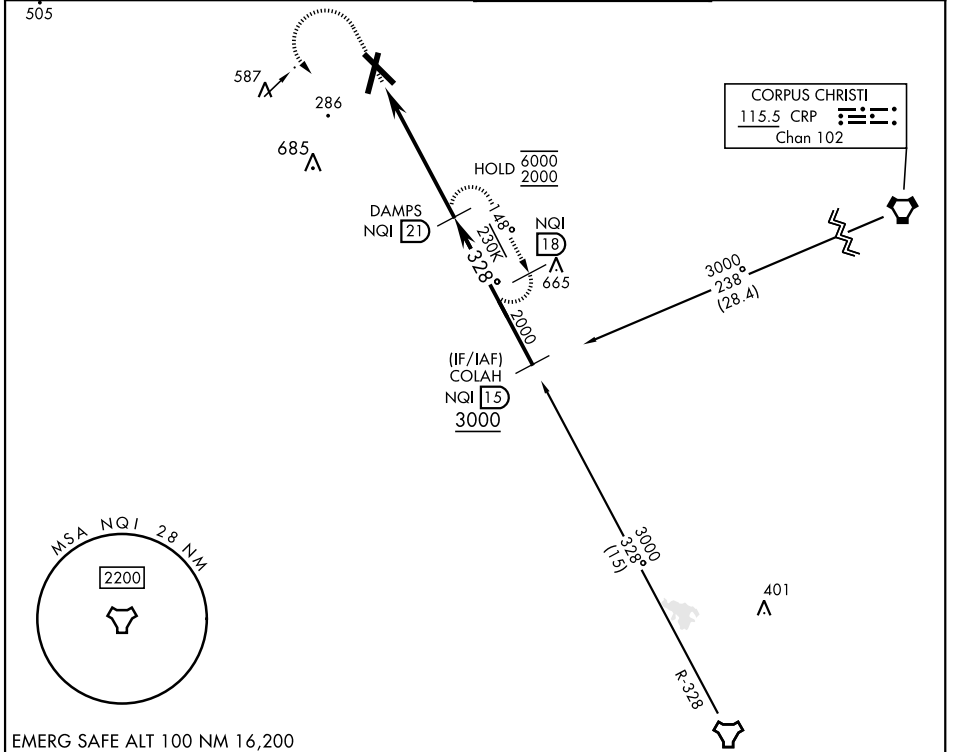
# TACAN-A

TACAN Chan <b>125</b>	NQI <b>328°</b>	APCH CRS <b>328°</b>	Rwy Idg TDZE Arprt Elev <b>N/A</b> <b>N/A</b> <b>257</b>
--------------------------	--------------------	-------------------------	-------------------------------------------------------------------------

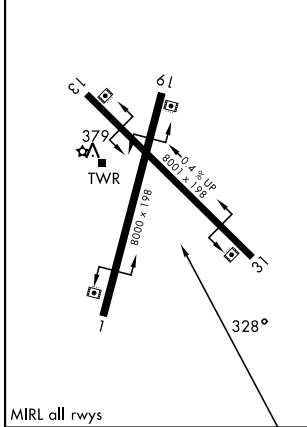
[USN]

ORANGE GROVE NALF (KNOG)

MISSED APPROACH: Climb to 2000 on NQI TACAN R-328, then left turn to intercept NQI R-328 to DAMPS and hold.			
ATIS ★ <b>254.35</b>	KINGSVILLE APP CON <b>119.90 290.45</b>	TOWER ★ <b>128.4 281.425</b>	GND CON <b>229.4</b>



EMERG SAFE ALT 100 NM 16,200



2000 NQI R-328		NQI R-328		DAMPS NQI (21)		COLAH NQI (15)	
HIKRE NQI (26.3)		DAMPS NQI (21)		3000		3000	
5.3 NM		2000		328°		3000	
CATEGORY	A		B		C		D
CIRCLING	720-1	463	(500-1)	920-1¾	1000-2½	663 (700-1¾)	743 (800-2½)

# TACAN-A