

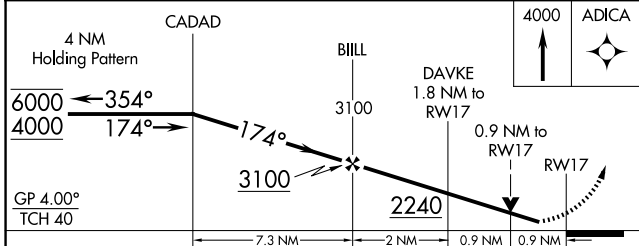
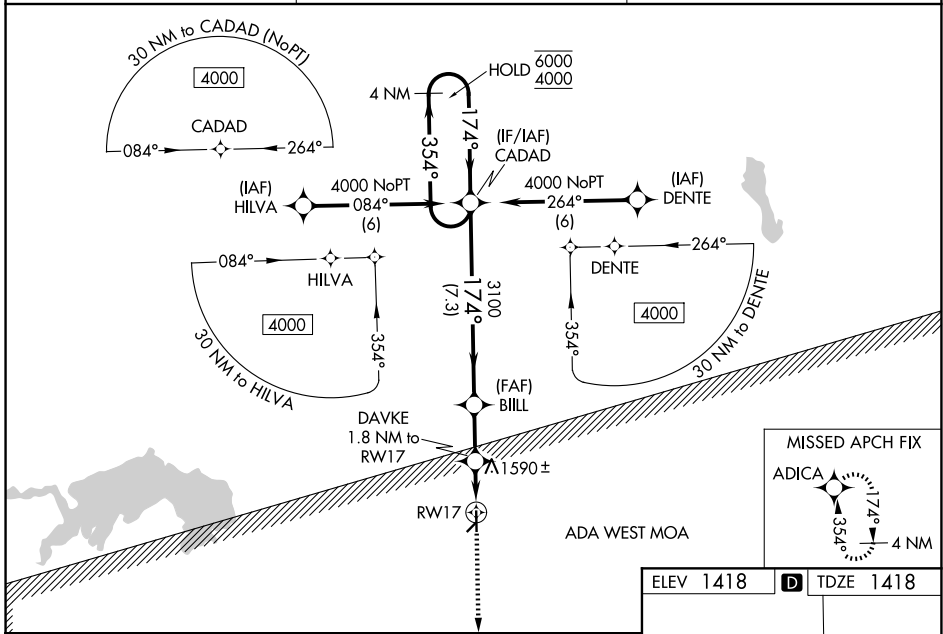
WAAS CH 42847 W17A	APP CRS 174°	Rwy Ldg 4018 TDZE 1418 Apt Elev 1418
--	------------------------	---

RNAV (GPS) RWY 17

MORITZ MEML (K61)

RNP APCH - GPS.		MISSED APPROACH: Climb to 4000 direct ADICA and hold.
<p>⚠ Rwy 17 helicopter visibility reduction below ¼ SM NA. For uncompensated Baro-VNAV systems, LNAV/VNAV NA below -17°C or above 54°C. Baro-VNAV and VDP NA when using CNK altimeter setting. Circling NA to Rwys 4 and 22. When local altimeter setting not received, use CNK altimeter setting and increase LPV DA to 1737 feet. Increase LNAV/VNAV DA to 1898 feet and all visibilities ½ SM. Increase all MDAs 60 feet.</p>		

AWOS-3PT 118.225	KANSAS CITY CENTER 134.9 363.2	UNICOM 122.8 (CTAF)
----------------------------	--	-------------------------------



ELEV 1418	TDZE 1418
<p>174°</p> <p>5.7 X 0.027</p> <p>2340 X 120</p> <p>35</p>	
MIRL Rwy 17-35	

CATEGORY	A	B	C	D
LPV DA	1679-1	261 (300-1)		NA
LNAV/VNAV DA	1840-1¼	422 (500-1¼)		NA
LNAV MDA	1840-1	422 (500-1)		NA
CIRCLING	1900-1 482 (500-1)	2260-1¼ 842 (900-1¼)		NA

NC-2, 14 MAY 2026 to 11 JUN 2026

NC-2, 14 MAY 2026 to 11 JUN 2026