

APP CRS <b>095°</b>	Rwy Ldg TDZE Apt Elev	<b>3886</b> <b>669</b> <b>670</b>
------------------------	-----------------------------	---

# RNAV (GPS) RWY 9

PRESQUE ISLE COUNTY (PZQ)

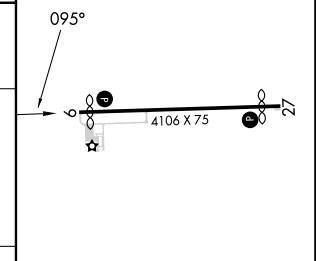
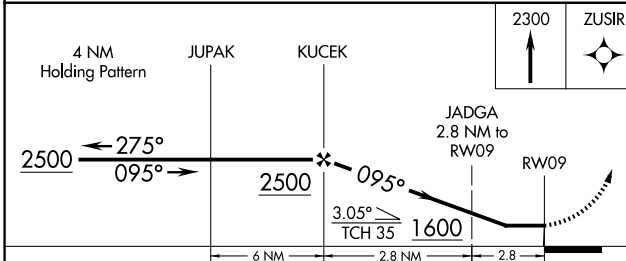
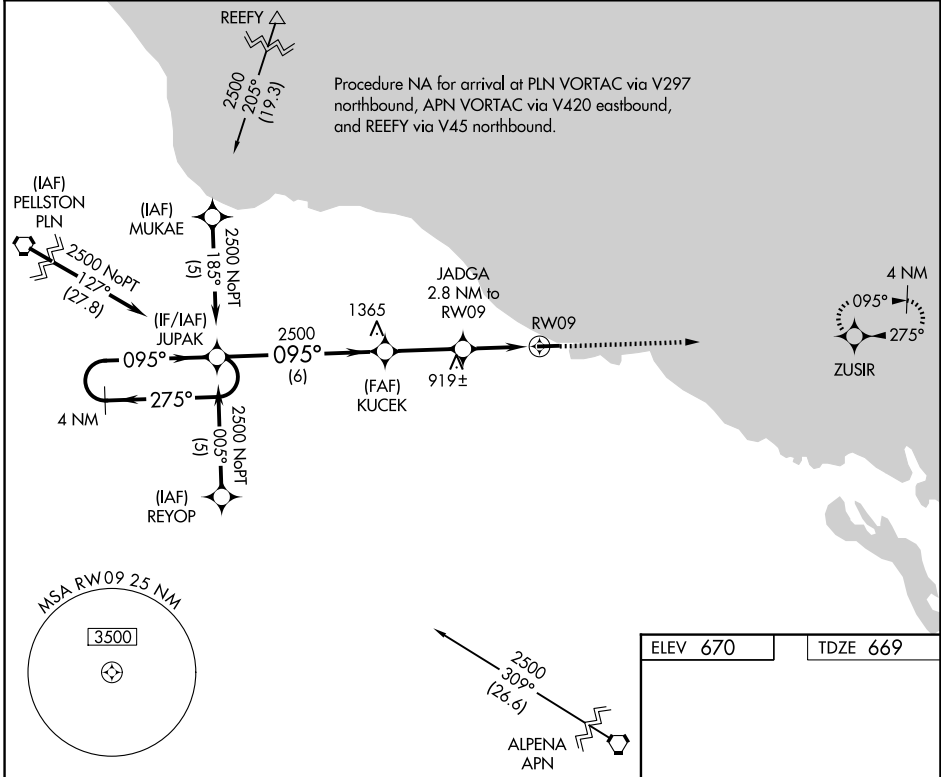
RNP APCH.  
 ▼ If local altimeter setting not received, use Alpena County Rgnl altimeter setting and increase all MDAs 60 feet. Straight-in/Circling Rwy 9 NA at night. Rwy 9 helicopter visibility reduction below 1 SM NA.  
 ▲ NA

MISSED APPROACH: Climb to 2300 direct ZUSIR and hold.

AWOS-3P  
**118.125**

ALPENA APP CON ★  
**128.425 379.3**

CTAF  
**122.9**



CATEGORY	A	B	C	D
LNAV MDA	1120-1	451 (500-1)	1120-1¼ 451 (500-1¼)	NA
CIRCLING	1200-1 530 (600-1)	1240-1 570 (600-1)	1260-1½ 590 (600-1½)	NA

REIL Rwy 9 and 27  
MRL Rwy 9-27

EC-1, 14 MAY 2026 to 11 JUN 2026

EC-1, 14 MAY 2026 to 11 JUN 2026