

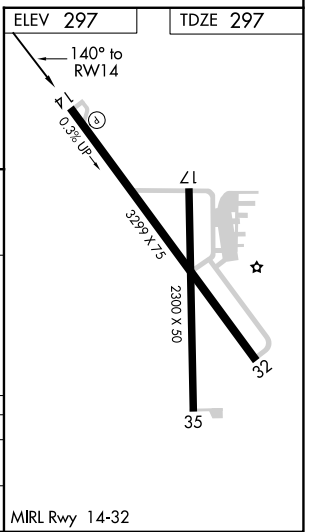
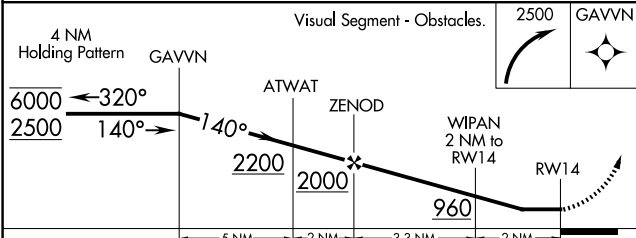
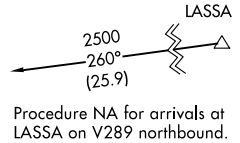
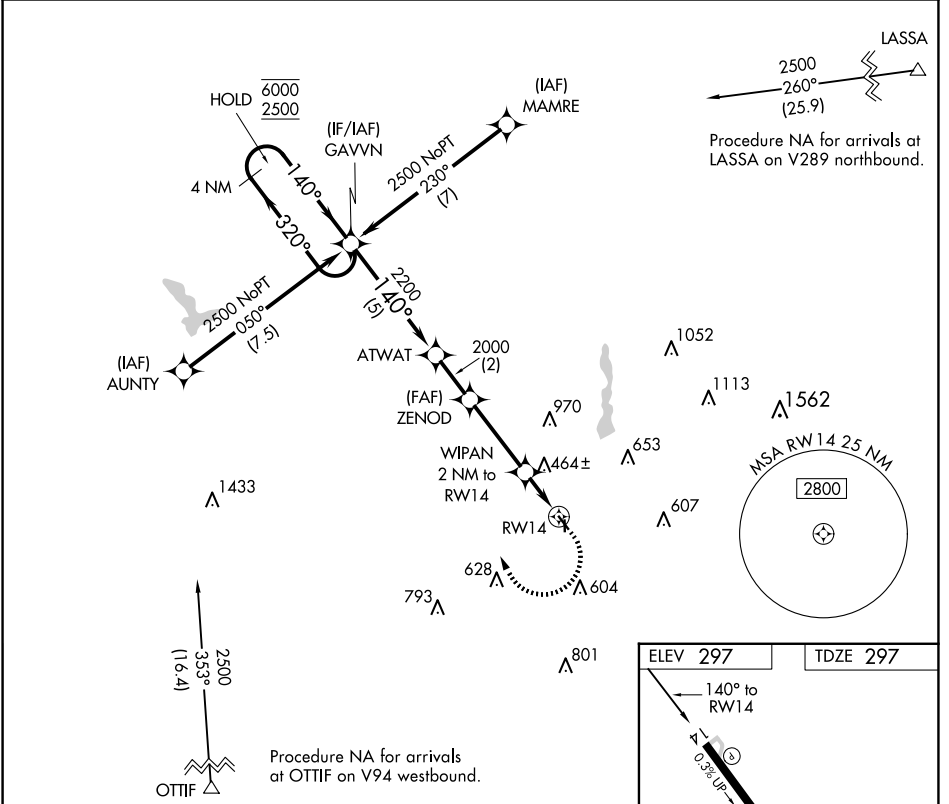
APP CRS	Rwy Idg	3299
140°	TDZE	297
	Apt Elev	297

RNAV (GPS) RWY 14

GLADEWATER MUNI (Ø7F)

RNP APCH.	Procedure NA at night. Rwy 14 helicopter visibility reduction below 1 SM NA. Use Gilmer altimeter setting, when not received use Longview altimeter setting and increase all MDA 20 feet and increase LNAV Cat C visibility 1/8 SM.	MISSED APPROACH: Climbing right turn to 2500 direct GAVVN and hold.
-----------	---	--

JXI AWOS-3PT 120.25	LONGVIEW APP CON * 124.275 257.975	CTAF 122.9
-------------------------------	--	----------------------



CATEGORY	A	B	C	D
LNAV MDA	800-1 503 (600-1)	800-1 3/8 503 (600-1 3/8)	800-1 3/8 503 (600-1 3/8)	NA
CIRCLING	880-1 583 (600-1)	1000-1 703 (800-1)	1000-2 703 (800-2)	NA

SC-2, 14 MAY 2026 to 11 JUN 2026

SC-2, 14 MAY 2026 to 11 JUN 2026