

WAAS CH <b>56447</b> <b>W26A</b>	APP CRS <b>255°</b>	Rwy Ldg TDZE Apt Elev	<b>3200</b> <b>464</b> <b>464</b>
--	------------------------	-----------------------------	---

# RNAV (GPS) RWY 26

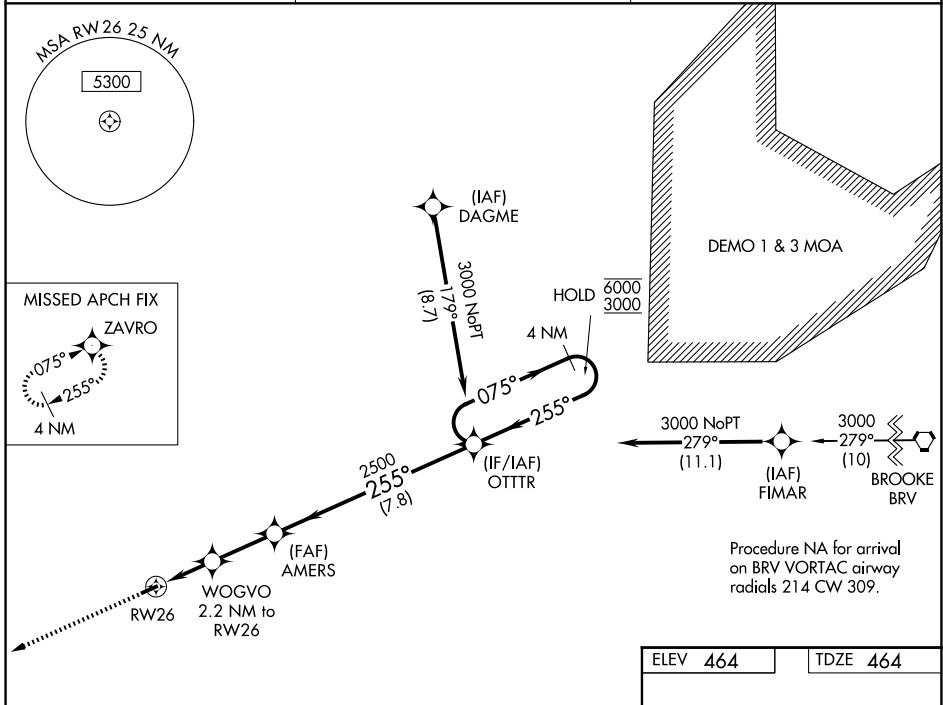
ORANGE COUNTY (OMH)

RNP APCH - GPS.

Procedure NA at night. Rwy 26 helicopter visibility reduction below 1SM NA.  
For uncompensated Baro-VNAV systems, LNAV/VNAV NA below -15°C or above 54°C.

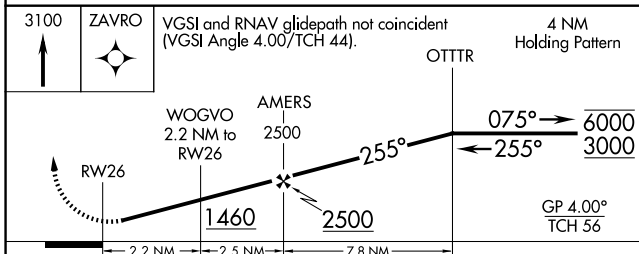
MISSED APPROACH:  
Climb to 3100 direct  
ZAVRO and hold.

AWOS-3 <b>118.075</b>	POTOMAC APP CON <b>132.85 323.125</b>	UNICOM <b>122.8 (CTAF) 0</b>
--------------------------	--	---------------------------------



NE-3, 14 MAY 2026 to 11 JUN 2026

NE-3, 14 MAY 2026 to 11 JUN 2026



CATEGORY	A	B	C	D
LPV DA	808-1	344 (400-1)		NA
LNAV/VNAV DA	914-1 $\frac{3}{8}$	450 (500-1 $\frac{3}{8}$ )		NA
LNAV MDA	1000-1	536 (600-1)		NA
CIRCLING	1320-1 $\frac{1}{4}$	856 (900-1 $\frac{1}{4}$ )		NA

ELEV 464	TDZE 464
----------	----------

MIRL Rwy 8-26 0  
REIL Rwy 8 and 26 0