

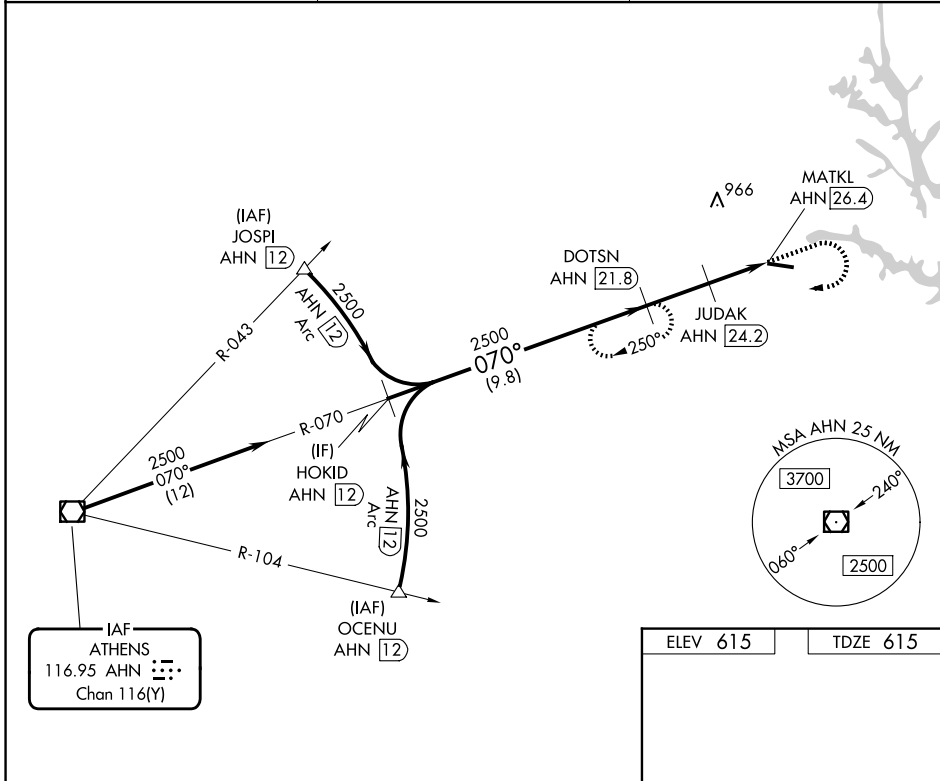
VOR/DME AHN 116.95 Chan 116(Y)	APP CRS 070°	Rwy Ldg TDZE Apt Elev 5004 615 615
--	------------------------	--

VOR RWY 11

ELBERT COUNTY-PATZ FLD (EBA)

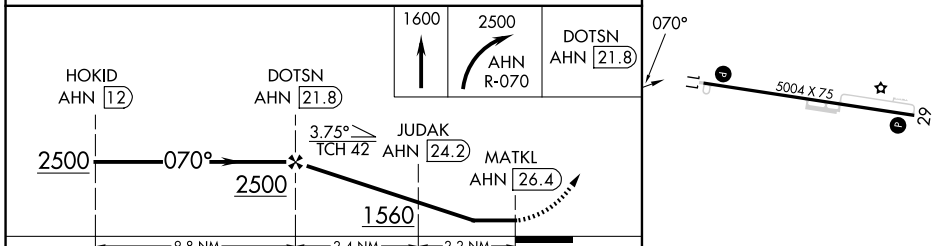
DME required.	MISSED APPROACH: Climb to 1600 then descending right turn to 2500 on AHN VOR/DME R-070 to DOTSN/AHN 21.8 DME and hold.
---------------	--

AWOS-3 118.15	ATLANTA CENTER 127.5 316.05	UNICOM 122.8 (CTAF)
-------------------------	---------------------------------------	-------------------------------

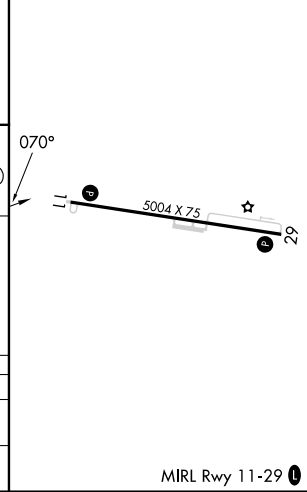


IAF
ATHENS
116.95 AHN
Chan 116(Y)

ELEV 615	TDZE 615
----------	----------



CATEGORY	A	B	C	D
S-11	1200-1	585 (600-1)	1200-1 $\frac{3}{4}$ 585 (600-1 $\frac{3}{4}$)	NA
CIRCLING	1200-1 585 (600-1)	1200-1 $\frac{1}{4}$ 585 (600-1 $\frac{1}{4}$)	1280-2 665 (700-2)	NA



MIRL Rwy 11-29

SE-4, 14 MAY 2026 to 11 JUN 2026

SE-4, 14 MAY 2026 to 11 JUN 2026