

WAAS CH <b>72614</b> <b>W05A</b>	APP CRS <b>055°</b>	Rwy Ldg <b>5080</b> TDZE <b>360</b> Apt Elev <b>361</b>
--	------------------------	---

# RNAV (GPS) RWY 5

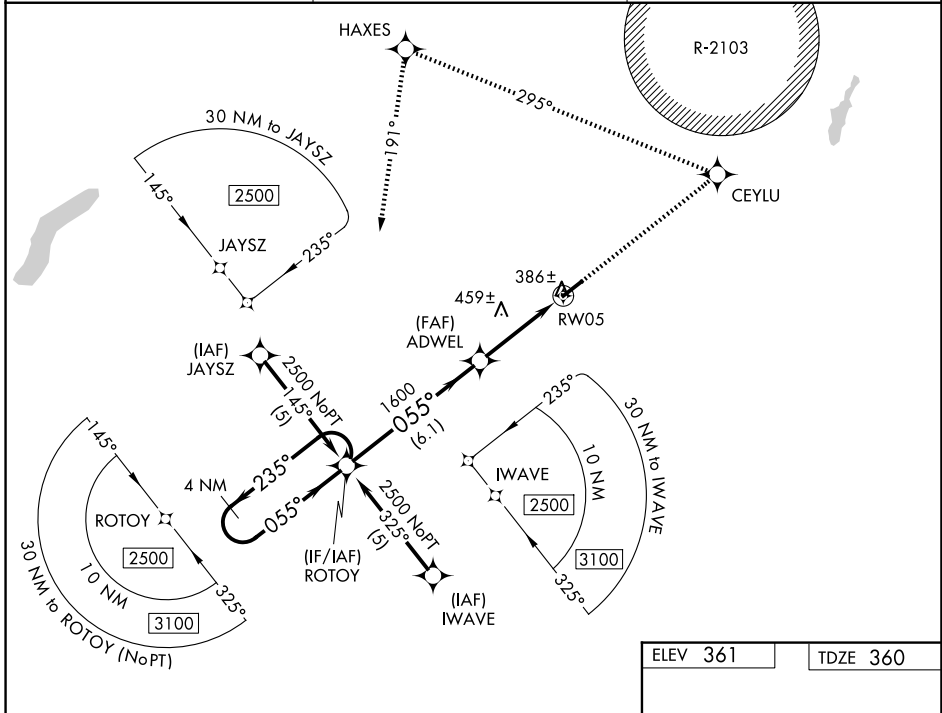
ENTERPRISE MUNI (EDN)

RNP APCH - GPS.

**⚠** Baro-VNAV NA when using OZR altimeter setting. For uncompensated Baro-VNAV systems, LNAV/VNAV NA below -1.5°C or above 54°C. When local altimeter setting not received, use OZR altimeter setting. Circling Rwy 23 NA at night.

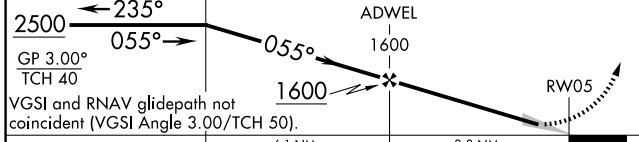
**MISSED APPROACH:** Climb to 2500 direct CEYLU and left turn via track 295° to HAXES and left turn via track 191° to ROTOY and hold.

AWOS-3PT <b>118.9</b>	CAIRNS APP CON ★ <b>133.45 239.275</b>	UNICOM <b>122.8(CTAF) 0</b>
--------------------------	---	--------------------------------



SE-4, 14 MAY 2026 to 11 JUN 2026

SE-4, 14 MAY 2026 to 11 JUN 2026



CATEGORY	A	B	C	D
LPV DA	642-1 282 (300-1)			NA
LNAV/VNAV DA	688-1¼ 328 (400-1¼)			NA
LNAV MDA	760-1 400 (400-1)			NA
CIRCLING	920-1 559 (600-1)		1100-2 739 (800-2)	NA

