

VOR EDN 116.6	APP CRS 065°	Rwy Ldg 5080
		TDZE 360
		Apt Elev 361

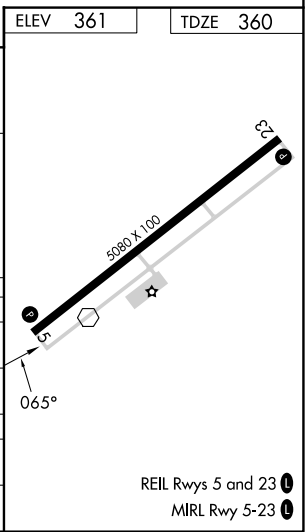
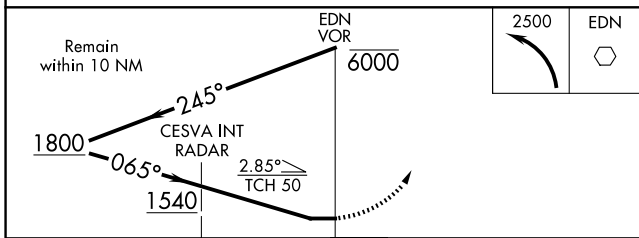
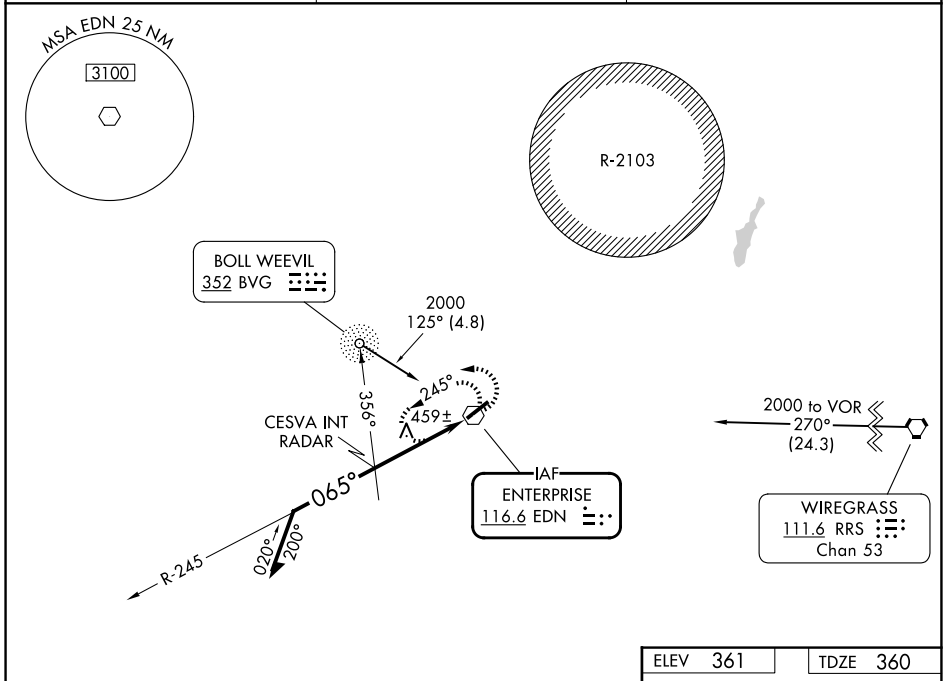
VOR RWY 5

ENTERPRISE MUNI(EDN)

⚠ ADF or RADAR required.
⚠ NA Use Cairns AAF (Fort Rucker) altimeter setting.

MISSED APPROACH:
 Climbing left turn to 2500
 in EDN VOR holding pattern.

AWOS-3PT 118.9	CAIRNS APP CON * 133.45 239.275	UNICOM 122.8 (CTAF)
--------------------------	---	-------------------------------



CATEGORY	A	B	C	D
S-5	1540-1¼ 1180 (1200-1¼)	1540-1½ 1180 (1200-1½)	1540-3 1180 (1200-3)	NA
CIRCLING	1540-1¼ 1179 (1200-1¼)	1540-1½ 1179 (1200-1½)	1540-3 1179 (1200-3)	NA
CESVA INT/RADAR MINIMUMS				
S-5	820-1	460 (500-1)	820-1¼ 460 (500-1¼)	NA
CIRCLING	920-1	559 (600-1)	1100-2 739 (800-2)	NA

SE-4, 14 MAY 2026 to 11 JUN 2026

SE-4, 14 MAY 2026 to 11 JUN 2026