

WAAS CH 40029 W31A	APP CRS 311°	Rwy Ldg 7000 TDZE 202 Apt Elev 208
---------------------------------	------------------------	---

RNAV (GPS) RWY 31

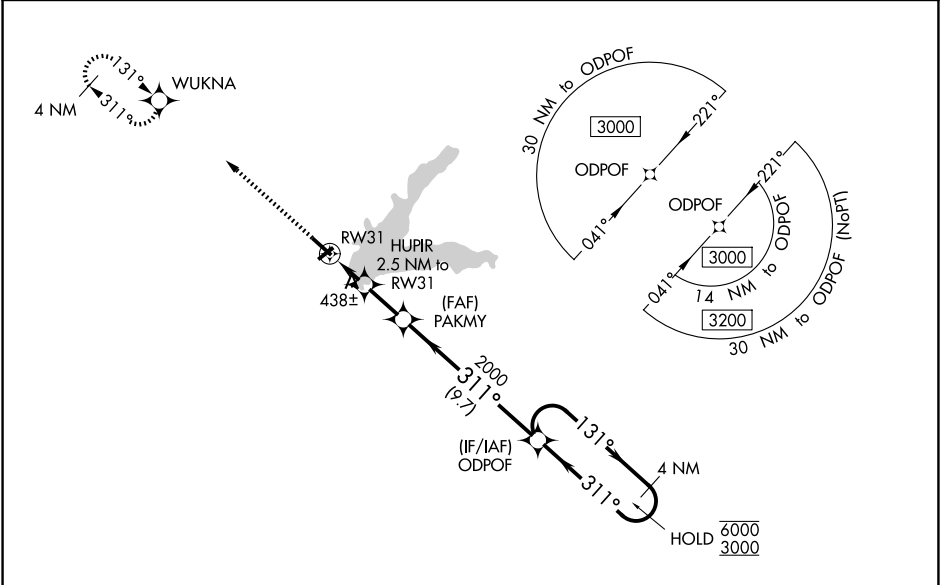
GRENADA MUNI (GNF)

RNP APCH.

▼ Baro-VNAV and VDP NA when using Greenwood altimeter setting. Rwy 31 helicopter visibility reduction below $\frac{3}{4}$ SM NA. For uncompensated Baro-VNAV systems, LNAV/VNAV NA below -9°C or above 46°C. When local altimeter setting not received use Greenwood altimeter setting: increase all DAs 65 feet and visibility LNAV/VNAV Cat C and D $\frac{1}{8}$ SM; increase all MDAs 80 feet and visibility LNAV Cats C and D and Circling all Cats $\frac{3}{8}$ SM. Circling Rwy 4, 22, NA at night.

▲ MISSED APPROACH: Climb to 3000 direct WUKNA and hold.

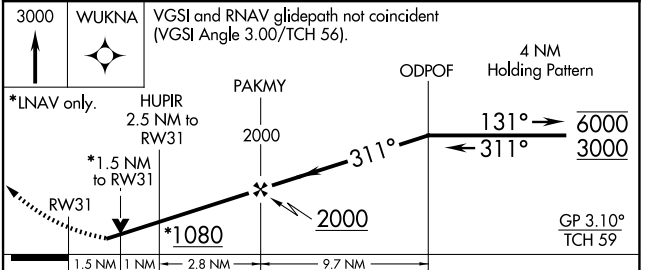
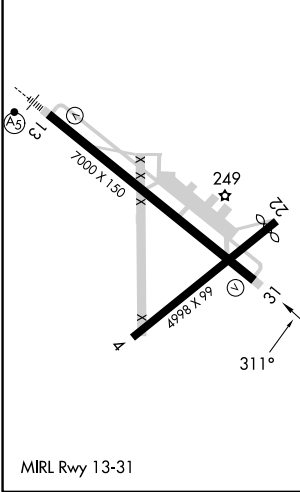
AWOS-3PT 118.025	MEMPHIS CENTER 128.5 279.55	UNICOM 122.8 (CTAF)
----------------------------	---------------------------------------	-------------------------------



SC-4, 14 MAY 2026 to 11 JUN 2026

SC-4, 14 MAY 2026 to 11 JUN 2026

ELEV 208	TDZE 202
----------	----------



CATEGORY	A	B	C	D
LPV DA		513-1	311 (400-1)	
LNAV/VNAV DA		679-1½	477 (500-1½)	
LNAV MDA	720-1	518 (600-1)	720-1¼	518 (600-1¼)
CIRCLING	1000-1	792 (800-1)	1000-2¼ 792 (800-2¼)	1060-2¾ 852 (900-2¾)