

LEVELLAND, TEXAS

AL-6570 (FAA)

23334

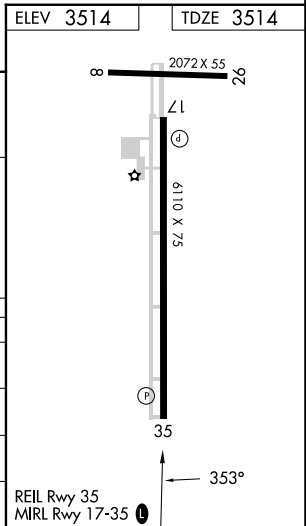
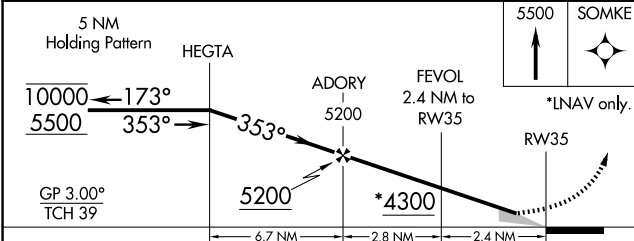
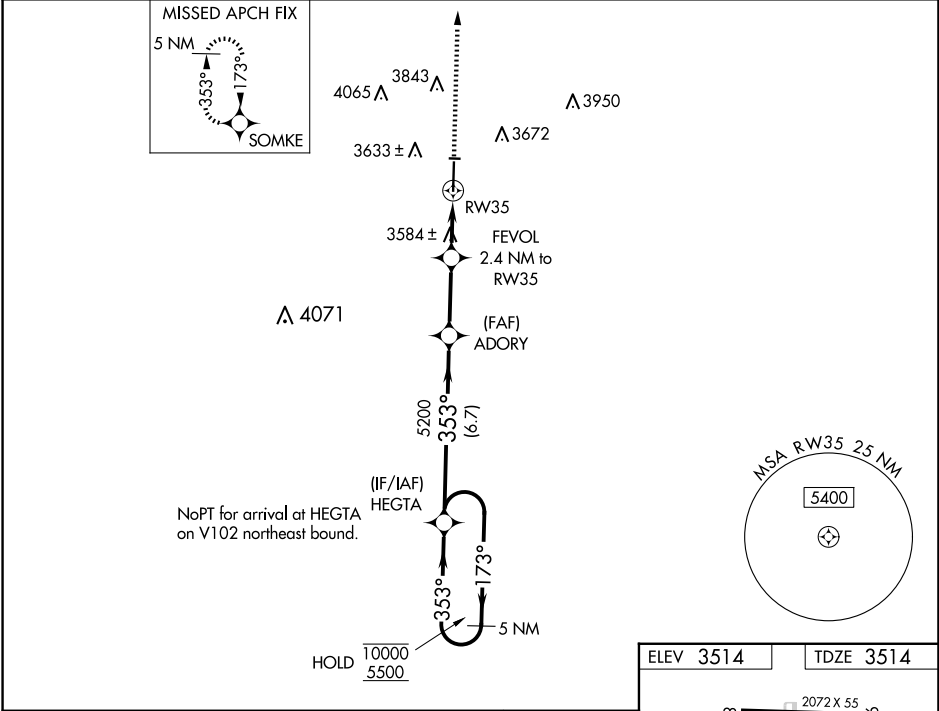
WAAS CH <b>65719</b> <b>W35A</b>	APP CRS <b>353°</b>	Rwy Idg TDZE <b>3514</b> Apt Elev <b>3514</b>
--	------------------------	---

# RNAV (GPS) RWY 35

LEVELLAND MUNI (LLN)

RNP APCH-GPS.	MISSED APPROACH: Climb to 5500 direct SOMKE and hold.
<p><b>V</b> Baro-VNAV NA. Use Lubbock altimeter setting. Circling to Rwy 8, 26 NA at night. Circling NA west of Rwy 17-35.</p> <p><b>A</b> NA</p>	

AWOS-3PT <b>121.125</b>	LBB ASOS <b>125.3 270.275</b>	LUBBOCK APP CON <b>119.2 351.8</b>	UNICOM <b>122.8 (CTAF)</b>
----------------------------	----------------------------------	---------------------------------------	-------------------------------



CATEGORY	A	B	C	D
LPV DA		3862-1 $\frac{1}{8}$	348 (400-1 $\frac{1}{8}$ )	
LNAV/DA		3862-1 $\frac{1}{8}$	348 (400-1 $\frac{1}{8}$ )	
LNAV MDA	3940-1	426 (500-1)	3940-1 $\frac{1}{4}$	426 (500-1 $\frac{1}{4}$ )
CIRCLING	4100-1 586 (600-1)	4300-1 $\frac{1}{4}$ 786 (800-1 $\frac{1}{4}$ )	4320-2 $\frac{1}{4}$ 806 (900-2 $\frac{1}{4}$ )	4320-2 $\frac{1}{2}$ 806 (900-2 $\frac{1}{2}$ )

LEVELLAND, TEXAS  
Amdt 1C 02DEC21

33°33'N-102°22'W

# RNAV (GPS) RWY 35

LEVELLAND MUNI (LLN)

SC-2, 14 MAY 2026 to 11 JUN 2026

SC-2, 14 MAY 2026 to 11 JUN 2026