

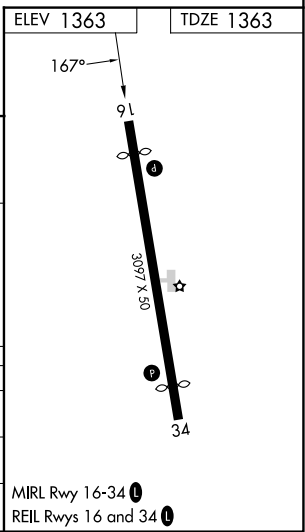
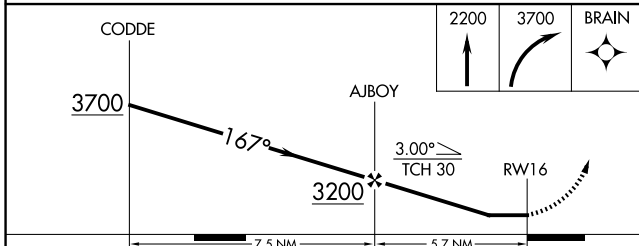
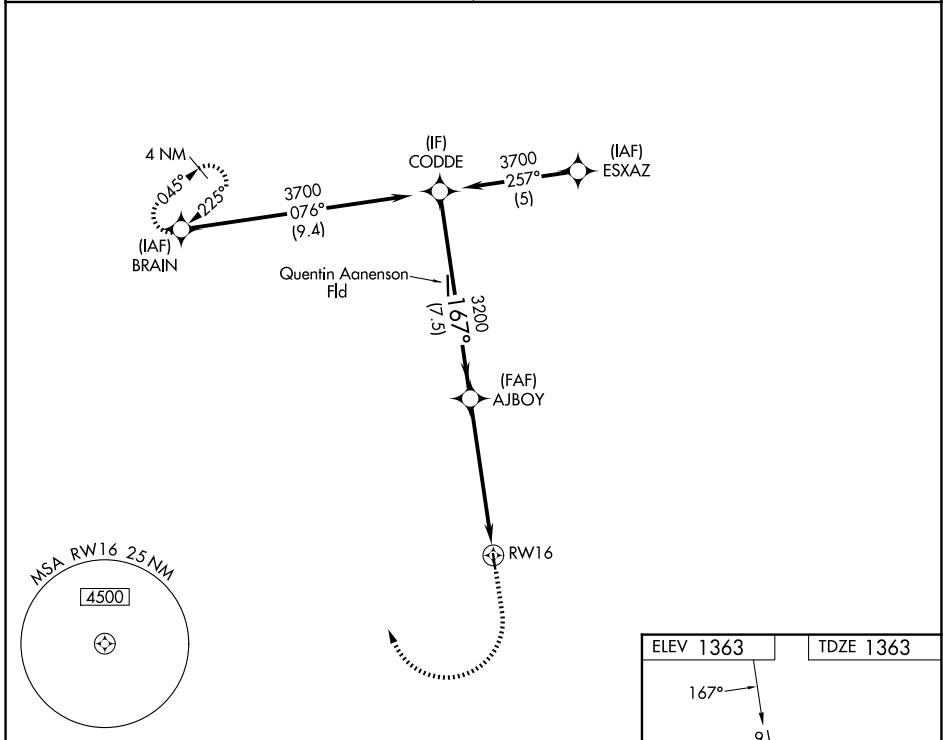
WAAS CH 82742	APP CRS 167°	Rwy Ldg TDZE Apt Elev	2797 1363 1363
W16A			

RNAV (GPS) RWY 16

ROCK RAPIDS MUNI (R.R.Q)

RNP APCH-GPS.	MISSED APPROACH: Climb to 2200 then climbing right turn to 3700 direct BRAIN and hold.
<p>Procedure NA at night. Rwy 16 helicopter visibility reduction below 1 SM NA. Use Sioux Falls altimeter setting.</p>	

<p>SIoux FALLS APP CON* 126.9 284.725</p>	<p>UNICOM 122.8 (CTAF)</p>
--	---------------------------------------



CATEGORY	A	B	C	D
LP MDA	1960-1	597 (600-1)		NA
LNAV MDA	1980-1	617 (700-1)		NA
CIRCLING	1980-1 617 (700-1)	2040-1 677 (700-1)		NA

MIRL Rwy 16-34
REIL Rws 16 and 34

NC-3, 14 MAY 2026 to 11 JUN 2026

NC-3, 14 MAY 2026 to 11 JUN 2026