

WAAS CH 40044 W34A	APP CRS 347°	Rwy Ldg TDZE Apt Elev	2797 1363 1363
--	------------------------	-----------------------------	---

RNAV (GPS) RWY 34

ROCK RAPIDS MUNI (R.R.Q)

RNP APCH - GPS.

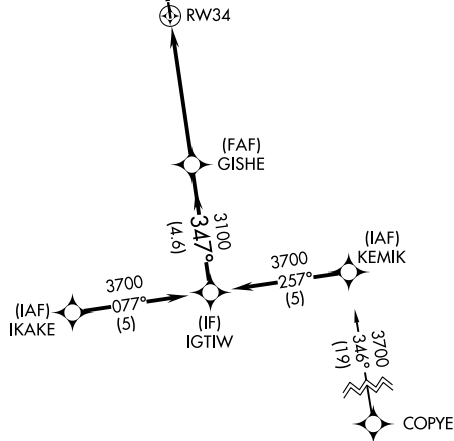
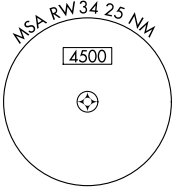
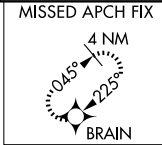
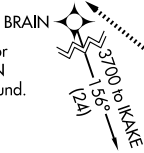
Procedure NA at night. Rwy 34 helicopter visibility reduction below 1 SM NA. Use Sioux Falls, SD altimeter setting.

MISSED APPROACH: Climb to 2200 then climbing left turn to 3700 direct BRAIN and hold.

SIoux FALLS APP CON *
126.9 284.725

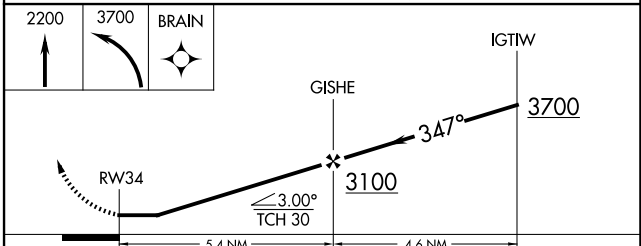
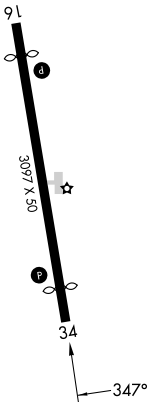
UNICOM
122.8 (CTAF) 0

Procedure NA for arrivals at BRAIN on T348 westbound.



ELEV 1363 TDZE 1363

MIRL Rwy 16-34
REIL Rwy 16 and 34



CATEGORY	A	B	C	D
LP MDA	1960-1	597 (600-1)		NA
LNAV MDA	1960-1	597 (600-1)		NA
CIRCLING	1960-1	2040-1		NA
	597 (600-1)	677 (700-1)		

NC-3, 14 MAY 2026 to 11 JUN 2026

NC-3, 14 MAY 2026 to 11 JUN 2026