

WAAS CH 86817 W13A	APP CRS 133°	Rwy Ldg TDZE 4698 2348 Apt Elev 2349
--	------------------------	---

RNAV (GPS) RWY 13

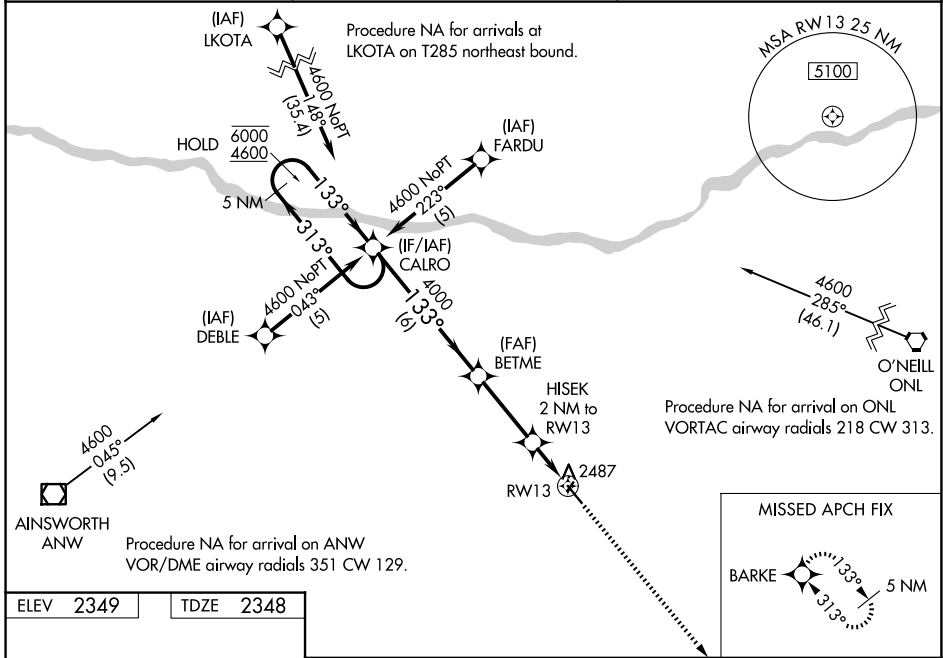
ROCK COUNTY (R.B.E.)

RNP APCH.

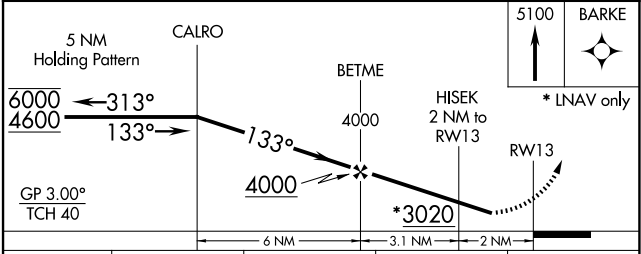
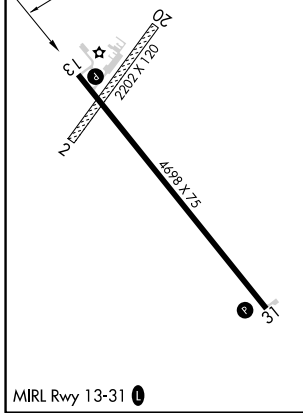
NA Circling NA to Rwy 2 and 20. Rwy 13 helicopter visibility reduction below 1 SM NA. Baro-VNAV NA. Use Ainsworth altimeter setting; when not received, use O'Neill altimeter setting and increase LPV DA to 2778 feet and visibility ¼ SM, LNAV/VNAV DA to 2815 feet and visibility ¼ SM; increase all MDAs 60 feet. Straight-in Rwy 13 NA at night, Circling Rwy 13 NA at night.

MISSED APPROACH: Climb to 5100 direct BARKE and hold.

ANW AWOS-3 118.325	DENVER CENTER 127.95 338.2	CTAF 122.90
------------------------------	--------------------------------------	-----------------------



ELEV 2349	TDZE 2348
-----------	-----------



CATEGORY	A	B	C	D
LPV DA	2723-1	375 (400-1)		NA
LNAV/VNAV DA	2760-1½	412 (500-1½)		NA
LNAV MDA	2880-1	532 (600-1)		NA
CIRCLING	2920-1	571 (600-1)		NA

NC-2, 14 MAY 2026 to 11 JUN 2026

NC-2, 14 MAY 2026 to 11 JUN 2026