

WAAS CH 69317 W31A	APP CRS 313°	Rwy Ldg TDZE Apt Elev 4698 2349 2349
--	------------------------	--

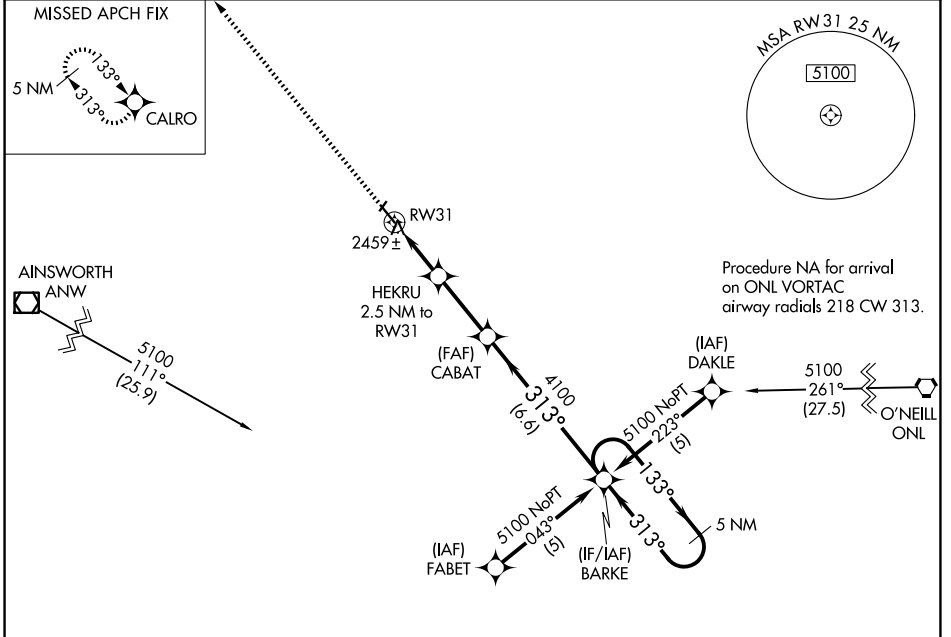
RNAV (GPS) RWY 31

ROCK COUNTY (R.B.E.)

NA When VGSi inoperative, Circling Rwy 13 NA at night. Baro-VNAV NA. DME/DME RNP-0.3 NA. Use Ainsworth altimeter setting; when not received, use O'Neill altimeter setting and increase all DA 59 feet and all MDA 60 feet. Circling NA to Rwy 2-20.

MISSED APPROACH: Climb to 4600 direct CALRO and hold.

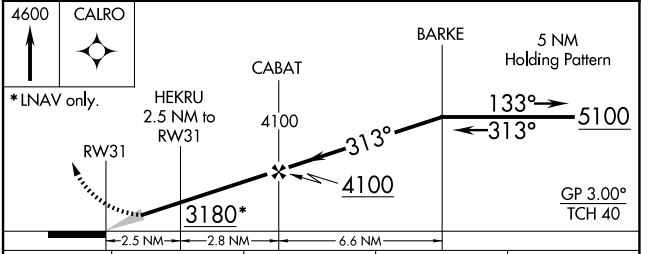
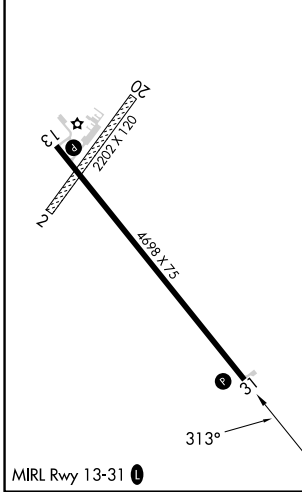
ANW AWOS-3 118.325	DENVER CENTER 127.95 338.2	CTAF 122.90
------------------------------	--------------------------------------	-----------------------



NC-2, 14 MAY 2026 to 11 JUN 2026

NC-2, 14 MAY 2026 to 11 JUN 2026

ELEV 2349	TDZE 2349
-----------	-----------



CATEGORY	A	B	C	D
LPV DA	2676-1¼	327 (400-1¼)		NA
LNAV/VNAV DA	2806-1¾	457 (500-1¾)		NA
LNAV MDA	2840-1	491 (500-1)		NA
CIRCLING	2920-1	571 (600-1)		NA