

# GIFFA ONE DEPARTURE

AL-6575 (FAA)

HOUSTON/SOUTHWEST (A.XH)

HOUSTON, TEXAS

AWOS-3  
 123.625  
 CLNC DEL  
 120.8  
 CTAF  
 123.0  
 HOUSTON DEP CON  
 123.8 257.7

**TOP ALTITUDE:  
ASSIGNED BY ATC**

NOTE: RADAR required.  
 NOTE: For aircraft destined for the DFW terminal area only.

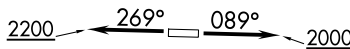
LEONA  
 110.8 LOA  
 Chan 45

CEDAR CREEK  
 114.8 CQY  
 Chan 95

DAISETTA  
 116.9 DAS  
 Chan 116

HUMBLE  
 116.6 IAH  
 Chan 113

TAKEOFF MINIMUMS  
 Rwys 9, 27: Standard.



(CONTINUED ON FOLLOWING PAGE)

NOTE: Chart not to scale.

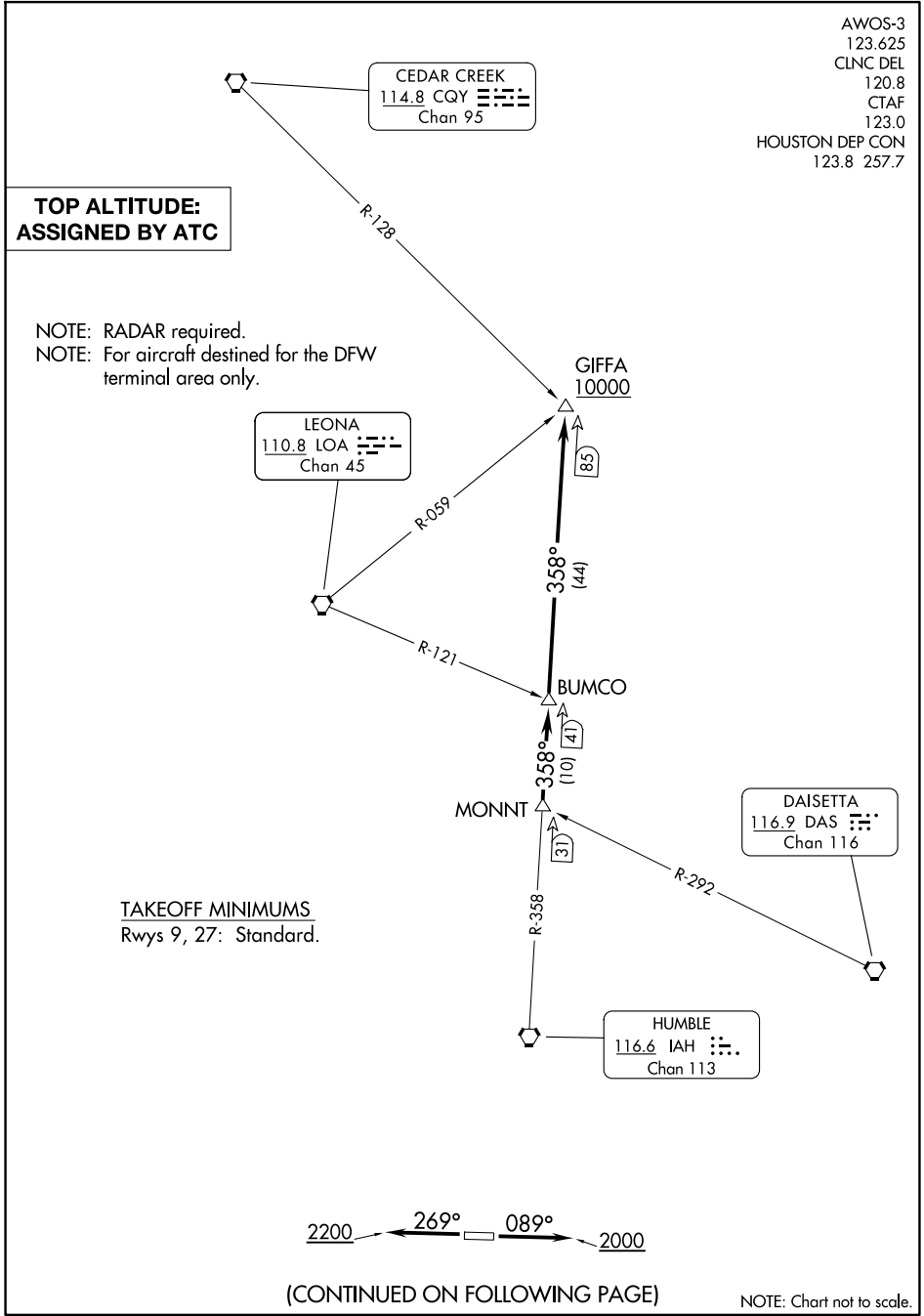
# GIFFA ONE DEPARTURE

HOUSTON, TEXAS

HOUSTON/SOUTHWEST (A.XH)

SC-5, 14 MAY 2026 to 11 JUN 2026

SC-5, 14 MAY 2026 to 11 JUN 2026





DEPARTURE ROUTE DESCRIPTION

TAKEOFF RUNWAY 9: Climb on heading 089° to 2000 before turning. When entering controlled airspace, climb on assigned heading for RADAR vectors to MONNT INT. Maintain ATC assigned altitude. Expect filed altitude 10 minutes after departure, thence . . . .

TAKEOFF RUNWAY 27: Climb on heading 269° to 2200 before turning. When entering controlled airspace, climb on assigned heading for RADAR vectors to MONNT INT. Maintain ATC assigned altitude. Expect filed altitude 10 minutes after departure, thence . . . .

. . . . on IAH R-358 to cross GIFFA INT at or above 10000.

SC-5, 14 MAY 2026 to 11 JUN 2026

SC-5, 14 MAY 2026 to 11 JUN 2026