

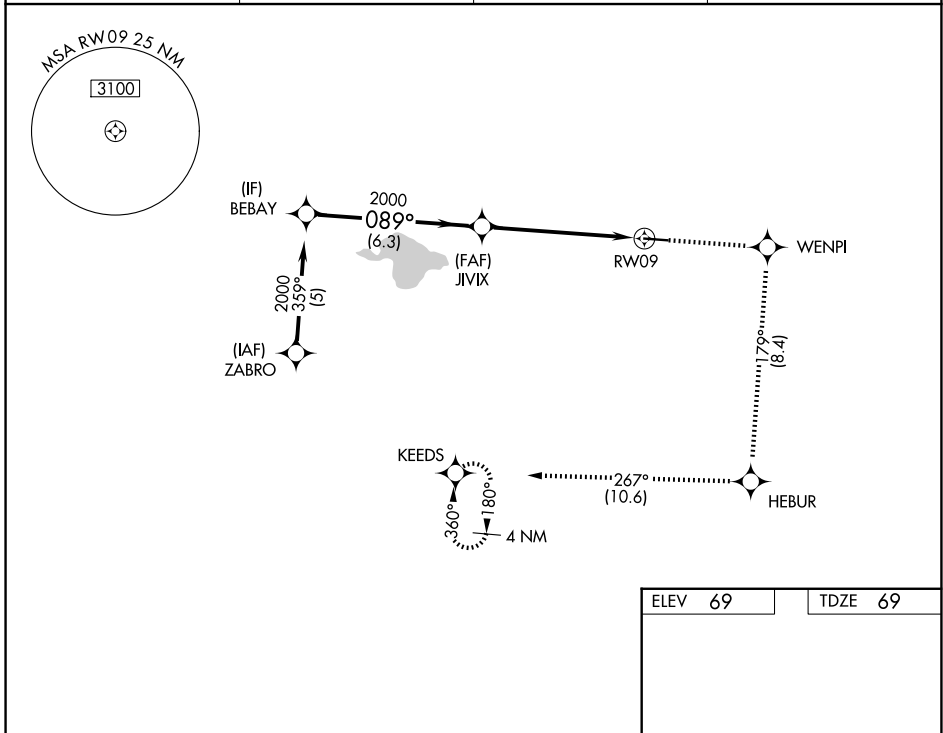
APP CRS	Rwy Ldg	5002
089°	TDZE	69
	Apt Elev	69

RNAV (GPS) RWY 9

HOUSTON/SOUTHWEST (A.X.H)

RNP APCH.	<p>MISSED APPROACH: Climb to 2700 direct WENPI and on track 179° to HEBUR and on track 267° to KEEDS and hold.</p>
<p>▼ Circling Rwy 27 NA at night. Rwy 9 helicopter visibility reduction below 3/4 SM NA.</p>	

AWOS-3 123,625	HOUSTON APP CON 123.8 257.7	CLNC DEL 120.8	UNICOM 123.0 (CTAF) 0
--------------------------	---------------------------------------	--------------------------	---------------------------------

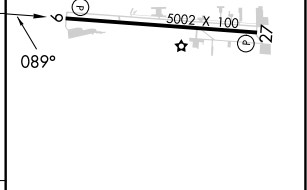
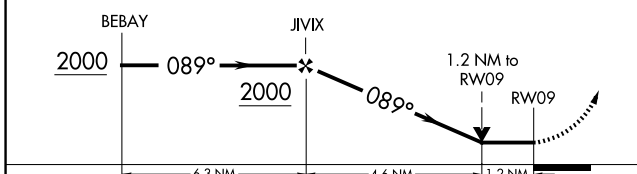


SC-5, 14 MAY 2026 to 11 JUN 2026

SC-5, 14 MAY 2026 to 11 JUN 2026

ELEV 69	TDZE 69
---------	---------

VGSI and descent angles not coincident (VGSI Angle 3.50/TCH 50).	2700	WENPI	tr 179°	HEBUR	tr 267°	KEEDS
--	------	-------	---------	-------	---------	-------



CATEGORY	A	B	C	D
RNAV MDA	580-1	511 (600-1)	580-1½ 511 (600-1½)	NA
CIRCLING	620-1	551 (600-1)	700-1¾ 631 (700-1¾)	NA

REIL Rwy 9 and 27 0
MIRL Rwy 9-27 0