

WAAS CH 82425 W14A	APP CRS 141°	Rwy Ldg TDZE Apt Elev	5507 998 998
--	------------------------	-----------------------------	---

RNAV (GPS) RWY 14

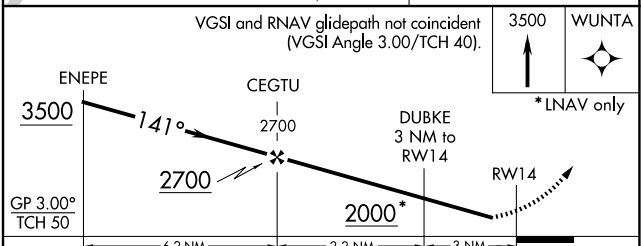
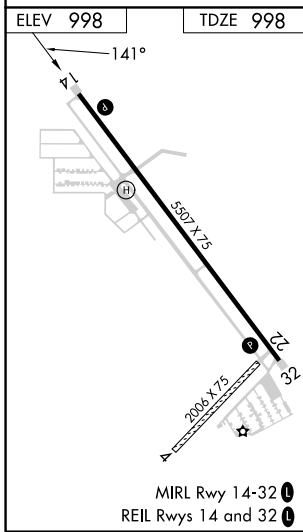
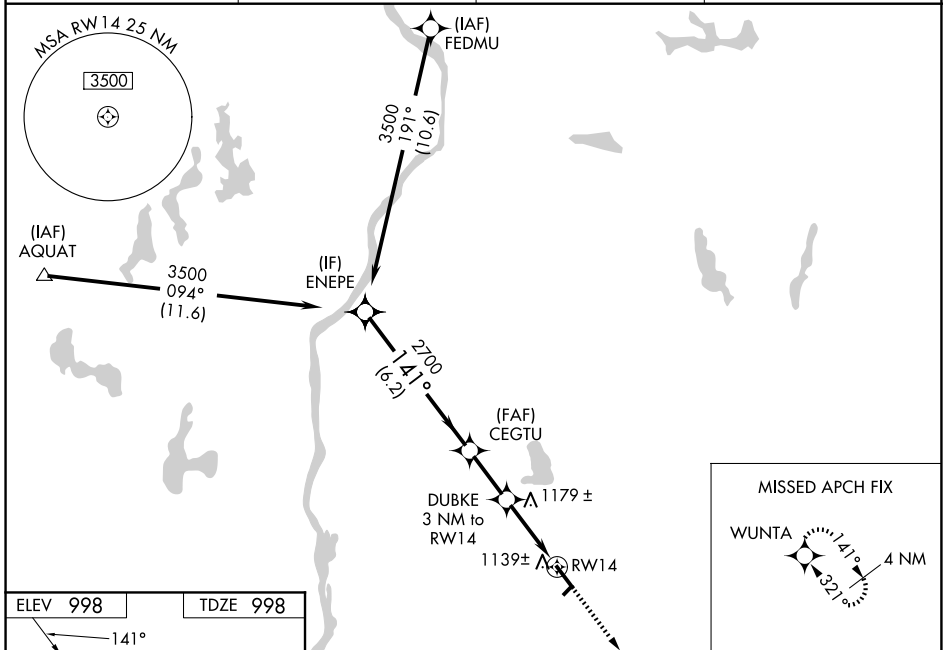
NEW RICHMOND RGNL (R.NH)

RNP APCH.

⚠ Baro-VNAV NA when using Osceola altimeter setting. For uncompensated Baro-VNAV systems, LNAV/VNAV NA below -16°C (4°F) or above 37°C (98°F). Rwy 14 helicopter visibility reduction below ¾ SM NA. When local altimeter setting not received, use Osceola altimeter setting and increase all DA/MDA 40 feet; Circling visibility Cats C and D ¼ SM.

MISSED APPROACH: Climb to 3500 direct WUNTA and hold.

AWOS-3 120.0	MINNEAPOLIS APP CON 121.2 335.65	GCO 121.725	UNICOM 122.975 (CTAF) 0
------------------------	--	-----------------------	-----------------------------------



CATEGORY	A	B	C	D
LPV DA		1272-1	274 (300-1)	
LNAV/VNAV DA		1320-1	322 (400-1)	
LNAV MDA	1440-1	442 (500-1)	1440-1¾	442 (500-1¾)
CIRCLING	1540-1	542 (600-1)	1660-1¾ 662 (700-1¾)	1660-2 662 (700-2)

EC-3, 14 MAY 2026 to 11 JUN 2026

EC-3, 14 MAY 2026 to 11 JUN 2026