

WAAS CH <b>45633</b> <b>W34A</b>	APP CRS <b>344°</b>	Rwy Ldg TDZE Apt Elev	<b>4500</b> <b>1304</b> <b>1304</b>
--	------------------------	-----------------------------	---

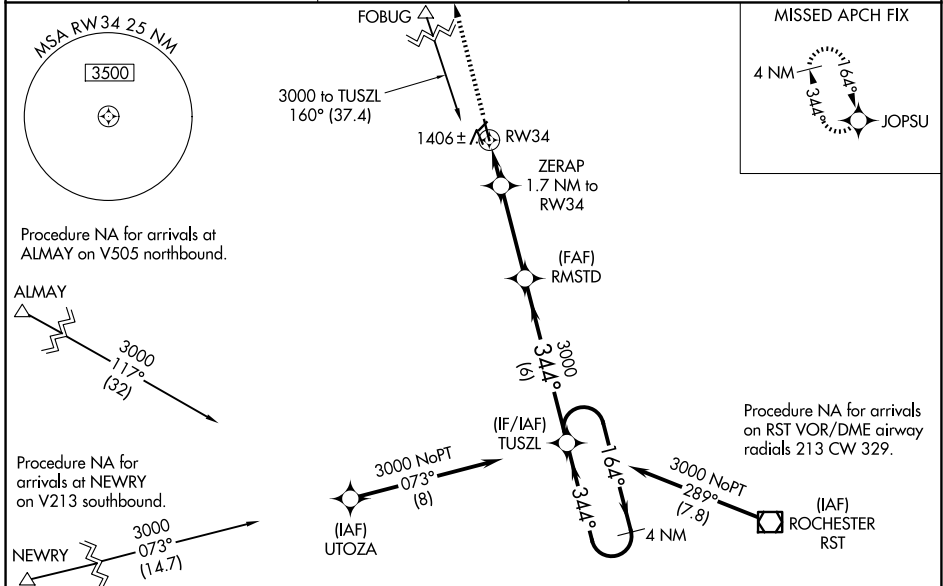
# RNAV (GPS) RWY 34

DODGE CENTER (TOB)

**⚠** Baro-VNAV NA when using Rochester Intl altimeter setting. For uncompensated Baro-VNAV systems, LNAV/VNAV NA below -17°C (2°F) or above 54°C (130°F). DME/DME RNP-0.3 NA. When local altimeter setting not received, use Rochester Intl altimeter setting and increase all DA 39 feet and all MDA 40 feet, and increase LNAV Cat C visibility 1/8 mile and Circling Cat C visibility 1/4 mile. Rwy 34 Straight-in and Circling minimums NA at night.

MISSED APPROACH: Climb to 3000 direct JOPSU and hold.

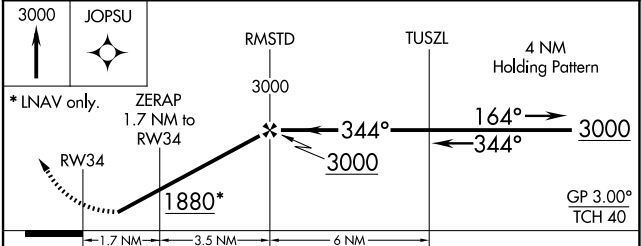
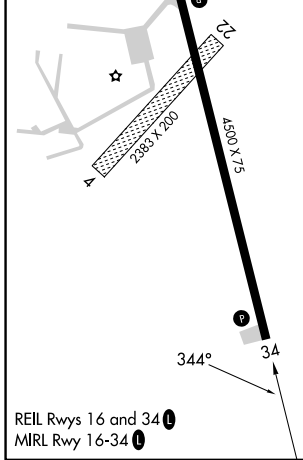
AWOS-3PT <b>119.075</b>	ROCHESTER APP CON ★ <b>119.8 251.125</b>	CTAF <b>122.9</b>
----------------------------	---	----------------------



NC-1, 14 MAY 2026 to 11 JUN 2026

NC-1, 14 MAY 2026 to 11 JUN 2026

ELEV 1304	TDZE 1304
-----------	-----------



CATEGORY	A	B	C	D
LPV DA	1554-1	250 (300-1)		NA
LNAV/VNAV DA	1556-1	252 (300-1)		NA
LNAV MDA	1660-1	356 (400-1)		NA
CIRCLING	1960-1	656 (700-1)	1960-1 3/4 656 (700-1 3/4)	NA