

APP CRS 190°	Rwy Idg TDZE Apt Elev	5201 726 726
------------------------	-----------------------------	---

RNAV (GPS) RWY 19

JAMES A RHODES (JRO)

RNP APCH - GPS.

- Procedure NA at night.
- Rwy 19 helicopter visibility reduction below 1 SM NA.

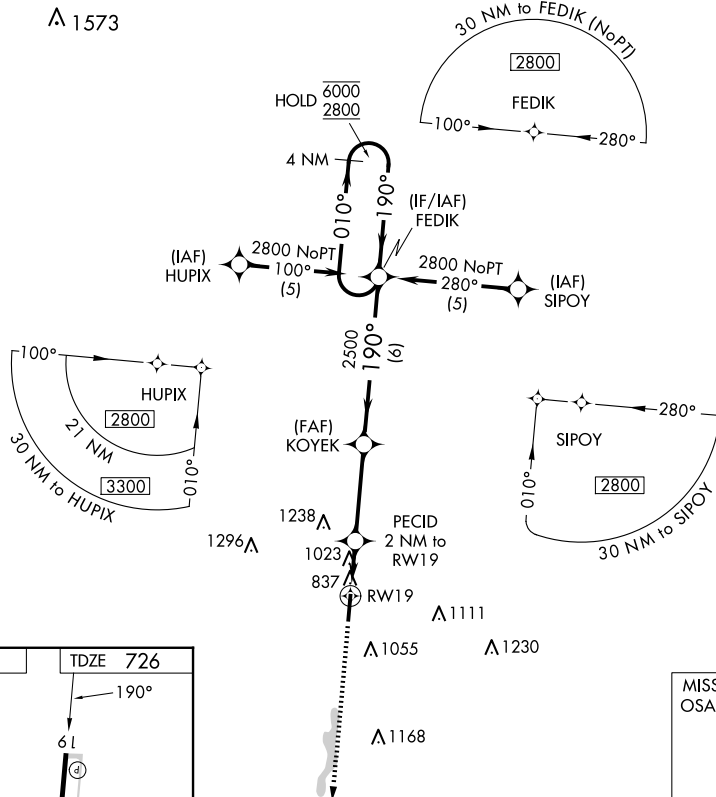
MISSED APPROACH: Climb to 2800 direct OSATE and hold.

AWOS-3PT
118.825

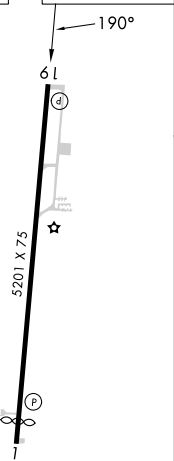
HUNTINGTON APP CON
128.4 270.1

UNICOM
122.7 (CTAF)

▲ 1573



ELEV 726	TDZE 726
----------	----------



MIRL Rwy 1-19

2800	OSATE	VGSI and descent angles not coincident (VGSI Angle 4.00/TCH 45).		FEDIK	4 NM Holding Pattern
		KOYEK			
		PECID 2 NM to RWY 19			
		RWY 19			
		3.32° TCH 40			
		1460		2500	
		2 NM	3.5 NM	6 NM	
CATEGORY	A	B	C	D	
LNAV MDA	1280-1	554 (600-1)	1280-1½	554 (600-1½)	
CIRCLING	1340-1 614 (700-1)	1480-1 754 (800-1)	1680-3	954 (1000-3)	

EC-2, 14 MAY 2026 to 11 JUN 2026

EC-2, 14 MAY 2026 to 11 JUN 2026