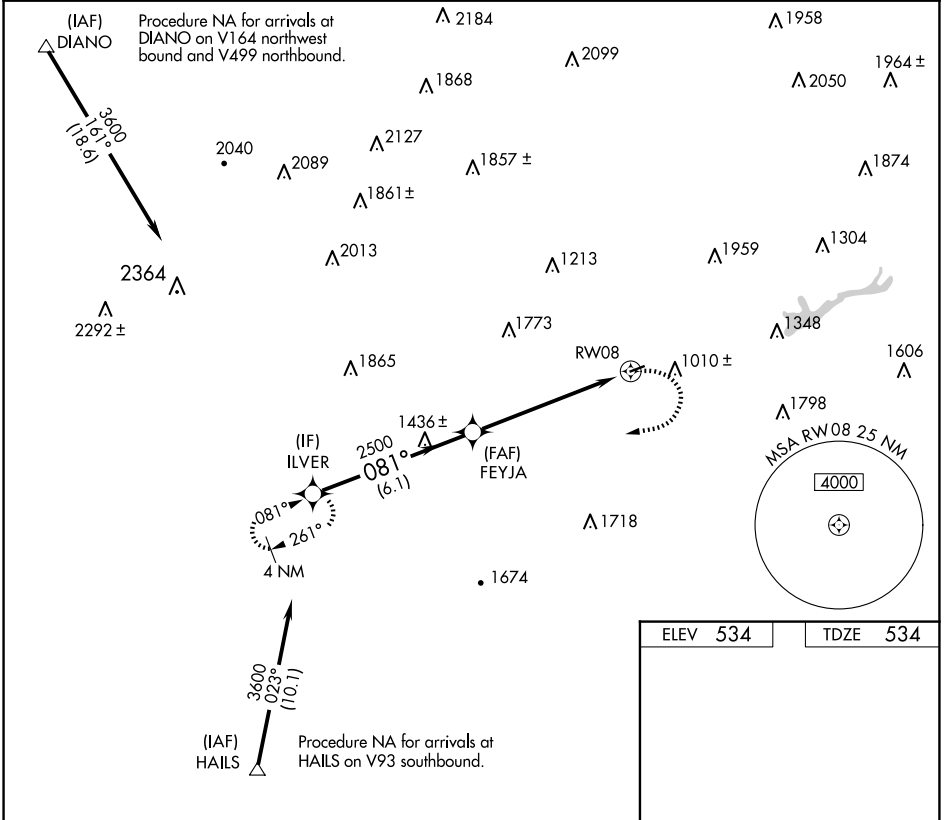


WAAS CH 99421 W08A	APP CRS 081°	Rwy Ldg TDZE Apt Elev 3000 534 534
--	------------------------	--

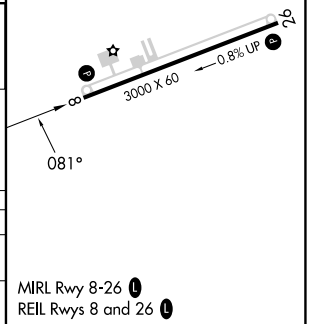
RNAV (GPS) RWY 8

JAKE ARNER MEML (22N)

RNP APCH.		MISSED APPROACH: Climbing right turn to 3600 direct ILVER and hold.
<p>When local altimeter setting not received, use Lehigh Valley Intl altimeter setting and increase all MDA 60 feet. Rwy 8 helicopter visibility reduction below 3/4 SM NA.</p> <p>-22°C</p>		
AWOS-3PT 119.350	ALLENTOWN APP CON 119.65 124.45 351.8	UNICOM 123.05 (CTAF) 0



	Visual Segment - Obstacles.		3600	ILVER
	ILVER	FEYJA		
	3600	2500		
	6.1 NM		6.1 NM	
CATEGORY	A	B	C	D
LP MDA	1540-1¼ 1006 (1100-1¼)	1540-1½ 1006 (1100-1½)	NA	
LNAV MDA	1600-1¼ 1066 (1100-1¼)	1600-1½ 1066 (1100-1½)	NA	



NE-4, 14 MAY 2026 to 11 JUN 2026

NE-4, 14 MAY 2026 to 11 JUN 2026