

APP CRS	Rwy Idg	<b>3304</b>
<b>012°</b>	TDZE	<b>40</b>
	Apt Elev	<b>41</b>

# RNAV (GPS) RWY 1

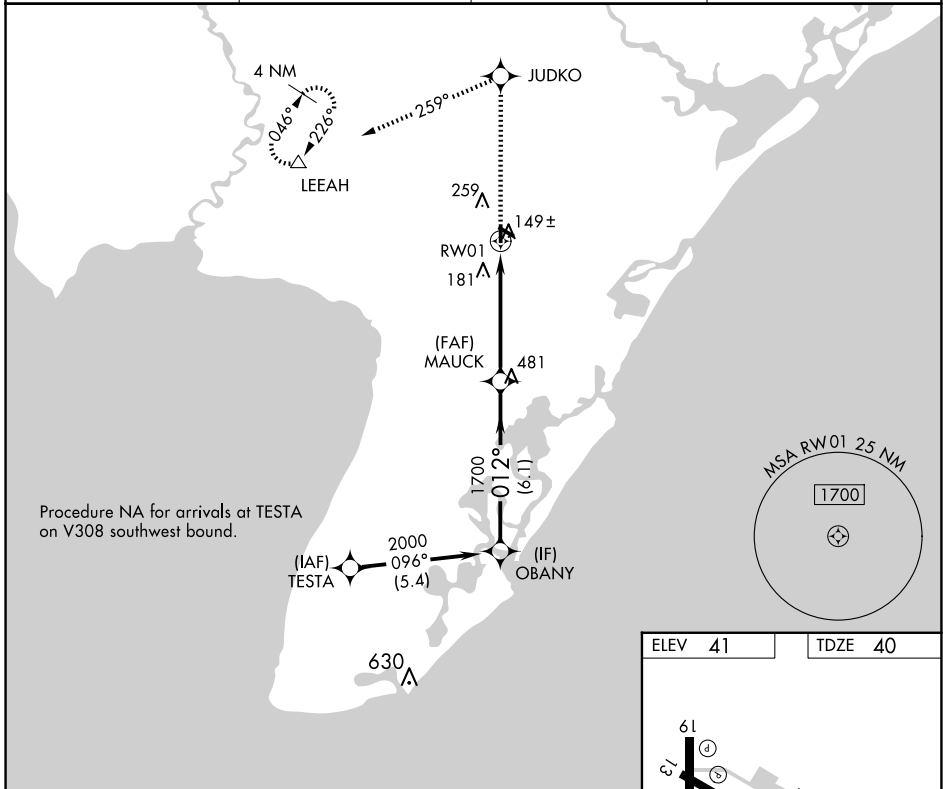
WOODBINE MUNI (OBI)

RNP APCH.

**▽** **△** NA  
 When local altimeter setting not received, use Millville Muni altimeter setting and increase all MDA 60 feet, and increase LNAV and Circling Cat C visibility 1/4 mile. VDP NA when using Millville Muni altimeter setting. Circling Rwy 13, 19, 31 NA at night. Rwy 1 helicopter visibility reduction below 3/4 SM NA.

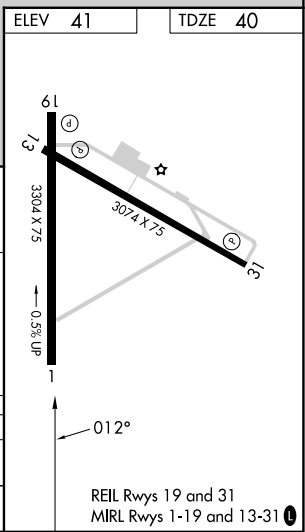
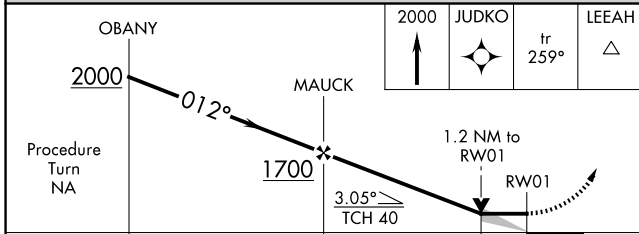
**MISSED APPROACH:** Climb to 2000 direct JUDKO and on track 259° to LEEAH and hold.

AWOS-3 <b>120.475</b>	ATLANTIC CITY APP CON <b>124.6 327.125</b>	GCO <b>121.725</b>	UNICOM <b>123.05 (CTAF) 0</b>
--------------------------	---	-----------------------	----------------------------------



NE-2, 14 MAY 2026 to 11 JUN 2026

NE-2, 14 MAY 2026 to 11 JUN 2026



	6.1 NM		3.9 NM		1.2 NM	
CATEGORY	A	B	C	D		
LNAV MDA	440-1	400 (400-1)	440-1 1/2 400 (400-1 1/2)	NA		
CIRCLING	620-1	579 (600-1)	620-1 1/2 579 (600-1 1/2)	NA		