

FORT CARSON, COLORADO

RNAV (GPS) RWY 31

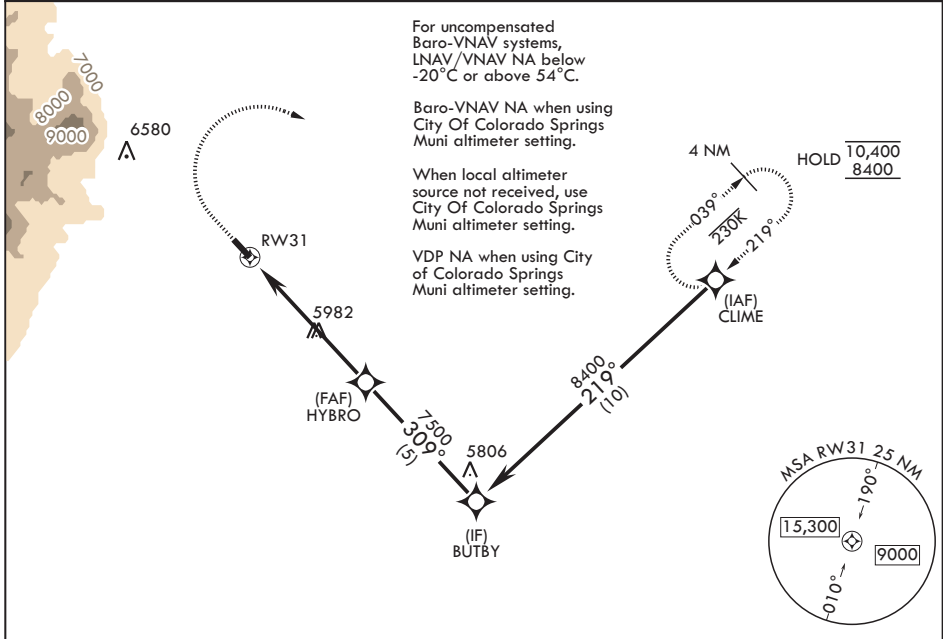
WAAS CH 43949 W31A	APCH CRS 309°	Rwy ldg TDZE Arprt Elev	4500 5826 5841
--------------------------	------------------	-------------------------------	----------------------

(USA)

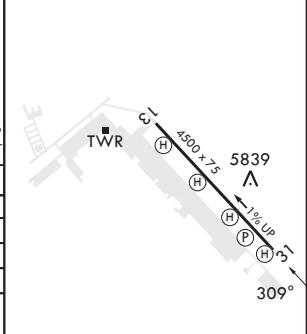
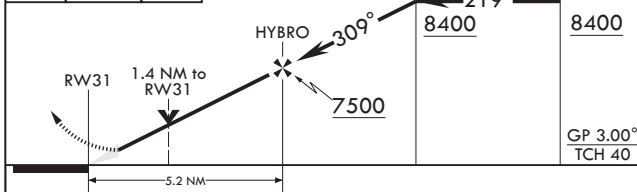
BUTTS AHP (FORT CARSON) (KFCS)

RNP APCH - GPS	MISSED APPROACH: Climb to 6400 then climbing right turn to 8400 direct CLIME and hold.
----------------	--

ATIS 108.8 226.3	SPRINGS APP CON/DEP CON 124.0 257.875	TOWER 125.5 229.4	GND CON 118.55 253.6	CLNC DEL 239.3
---------------------	--	----------------------	-------------------------	-------------------



ELEV 5841	TDZE 5826
-----------	-----------



CATEGORY	A	B	C	D
LPV DA	6026-3/4	200	(200-3/4)	
LNAV/VNAV DA	6130-7/8	304	(300-7/8)	
LNAV MDA	6280-1 454 (500-1)	6280-1 3/8 454 (500-1 1/8)		
CIRCLING*	6280-1 439 (500-1)	6400-1 559 (600-1)	6580-2 739 (800-2)	6840-3 999 (1000-3)
CITY OF COLORADO SPRINGS MUNI ALTIMETER SETTING MINIMUMS				
LPV DA	6094-7/8	268	(300-7/8)	
LNAV/VNAV DA	6198-1	372	(400-1)	
LNAV MDA	6360-1 534 (600-1)	6360-1 1/2 534 (600-1 1/2)		
CIRCLING*	6360-1 519 (600-1)	6480-1 639 (700-1)	6660-2 1/2 819 (900-2 1/2)	6920-3 1079 (1100-3)

MIRL all rwys

FORT CARSON, COLORADO
Amdt 1 04SEP25

38°42'N - 104°45'W

BUTTS AHP (FORT CARSON) (KFCS)

RNAV (GPS) RWY 31

SW-1, 14 MAY 2026 to 11 JUN 2026

SW-1, 14 MAY 2026 to 11 JUN 2026