

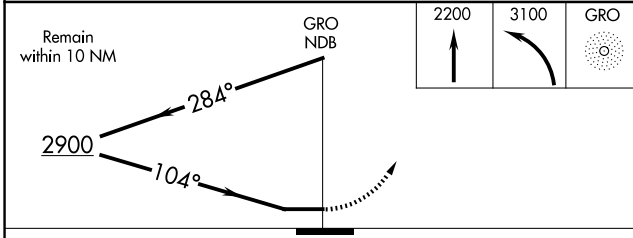
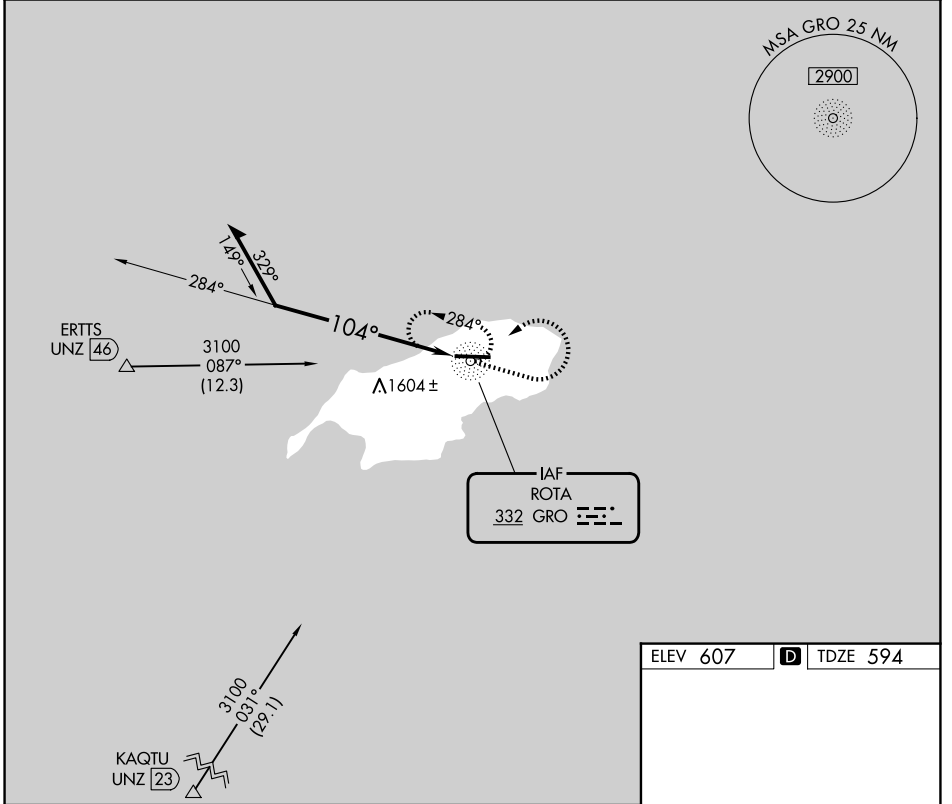
NDB GRO <b>332</b>	APP CRS <b>104°</b>	Rwy Ldg 7000
		TDZE 594
		Apt Elev 607

# NDB RWY 9

BENJAMIN TAISACAN MANGLONA INTL (GRO)(PGRO)

<p><b>⚠</b> When local altimeter setting not received, use Andersen AFB altimeter setting and increase all MDA 320 feet. Circling NA south of Rwy 9-27.</p>	<p><b>MISSED APPROACH:</b> Climb to 2200 then climbing left turn to 3100 direct GRO NDB and hold.</p>
---	---

<p>GUAM CERAP <b>120.5 263.0</b></p>	<p>CTAF <b>123.6</b></p>
--	------------------------------



ELEV 607	<b>D</b>	TDZE 594
----------	----------	----------

CATEGORY	A	B	C	D
S-9	1800-1¼ 1206 (1200-1¼)	1800-1½ 1206 (1200-1½)	1800-3	1206 (1200-3)
CIRCLING	1800-1¼ 1193 (1200-1¼)	1800-1½ 1193 (1200-1½)	1800-3	1193 (1200-3)

REIL Rwy 9 **⓪**  
MIRL Rwy 9-27 **⓪**

PAC: 14 MAY 2026 to 09 JUL 2026

PAC: 14 MAY 2026 to 09 JUL 2026