

# RNAV (GPS)-B

MEEKER COULTER FLD (EEO)

APP CRS <b>131°</b>	Rwy Ldg TDZE <b>N/A</b>	N/A
	Apt Elev <b>6415</b>	N/A

RNP APCH - GPS.

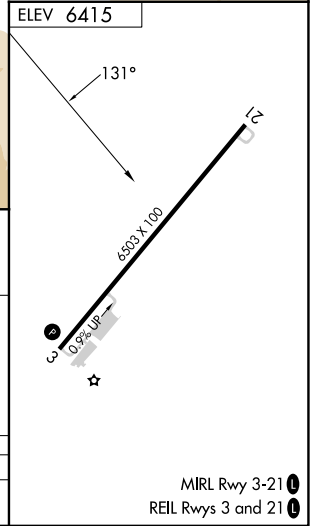
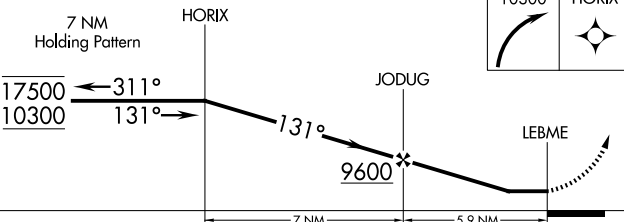
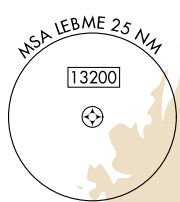
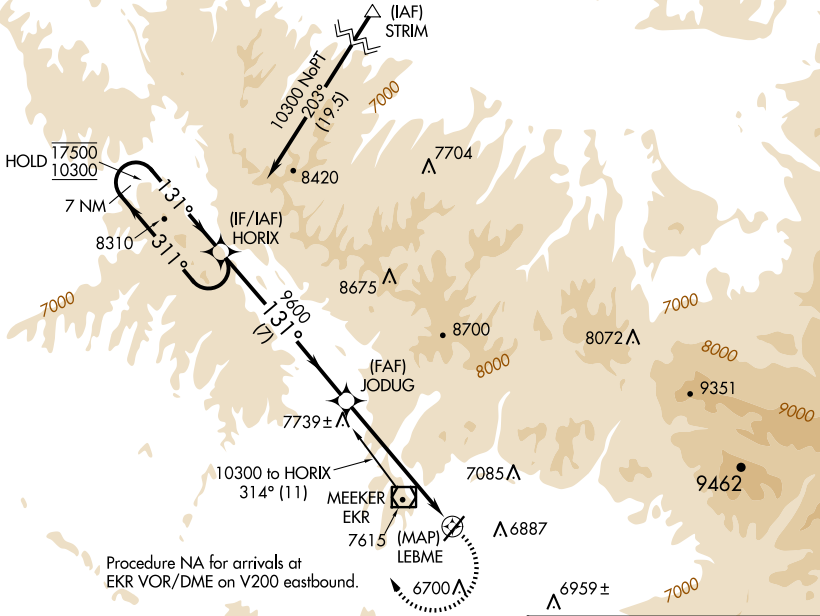
Circling NA west of Rwy 3-21. Rwy 21 helicopter visibility reduction below 1 SM NA. Circling Rwy 21 NA at night.  
 -22°C

MISSED APPROACH: Climbing right turn to 10300 direct HORIX and hold.

ASOS  
**135.525**

DENVER CENTER  
**134.5 327.8**

UNICOM  
**122.8 (CTAF)**



CATEGORY	A	B	C	D
CIRCLING	8260-1¼ 1845 (1900-1¼)	8260-1½ 1845 (1900-1½)	8620-3 2205 (2300-3)	NA

SW-1, 14 MAY 2026 to 11 JUN 2026

SW-1, 14 MAY 2026 to 11 JUN 2026

MIRL Rwy 3-21  
REIL Rwys 3 and 21