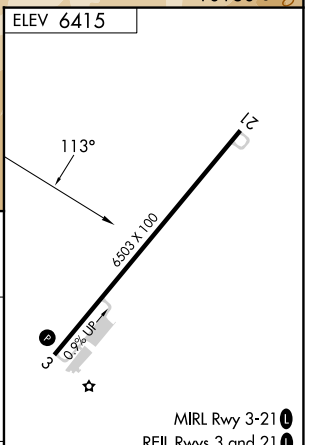
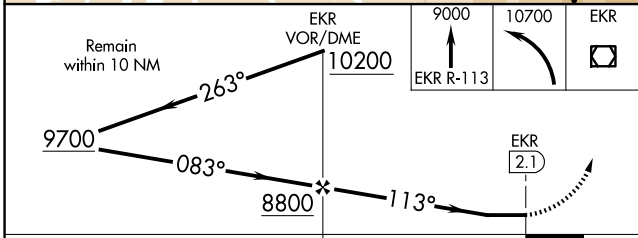
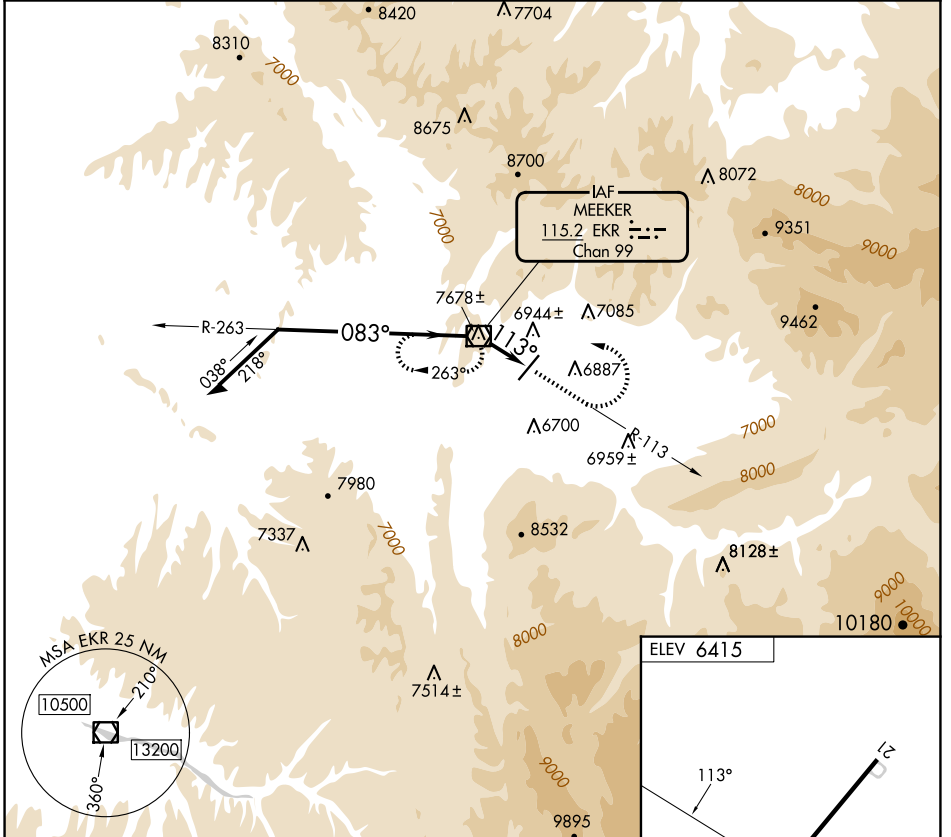


VOR/DME EKR <b>115.2</b> Chan <b>99</b>	APP CRS <b>113°</b>	Rwy Ldg TDZE Apt Elev <b>6415</b>	<b>N/A</b> <b>N/A</b> <b>6415</b>
---	------------------------	---	---

**VOR-A**  
MEEKER COULTER FLD (E/O)

<p><b>⚠</b> Circling NA west of Rwy 3-21. Rwy 21 helicopter visibility reduction below 1 SM NA. Circling Rwy 21 NA at night.</p> <p><b>❄</b> -22°C</p>	<p><b>MISSED APPROACH:</b> Climb to 9000 on EKR VOR/DME R-113 then climbing left turn to 10700 direct EKR VOR/DME and hold, continue climb in hold to 10700.</p>
--	--

ASOS <b>135.525</b>	DENVER CENTER <b>134.5 327.8</b>	UNICOM <b>122.8 (CTAF) 0</b>
------------------------	-------------------------------------	---------------------------------



CATEGORY	A	B	C	D	FAF to MAP 2.1 NM					
CIRCLING	8020-1¼ 1605 (1700-1¼)	8020-1½ 1605 (1700-1½)	8620-3 2205 (2300-3)	NA	Knots	60	90	120	150	180
					Min:Sec	2:06	1:24	1:03	0:50	0:42

SW-1, 14 MAY 2026 to 11 JUN 2026

SW-1, 14 MAY 2026 to 11 JUN 2026