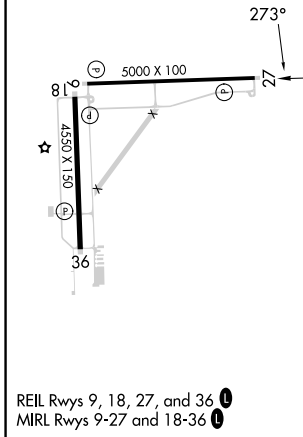
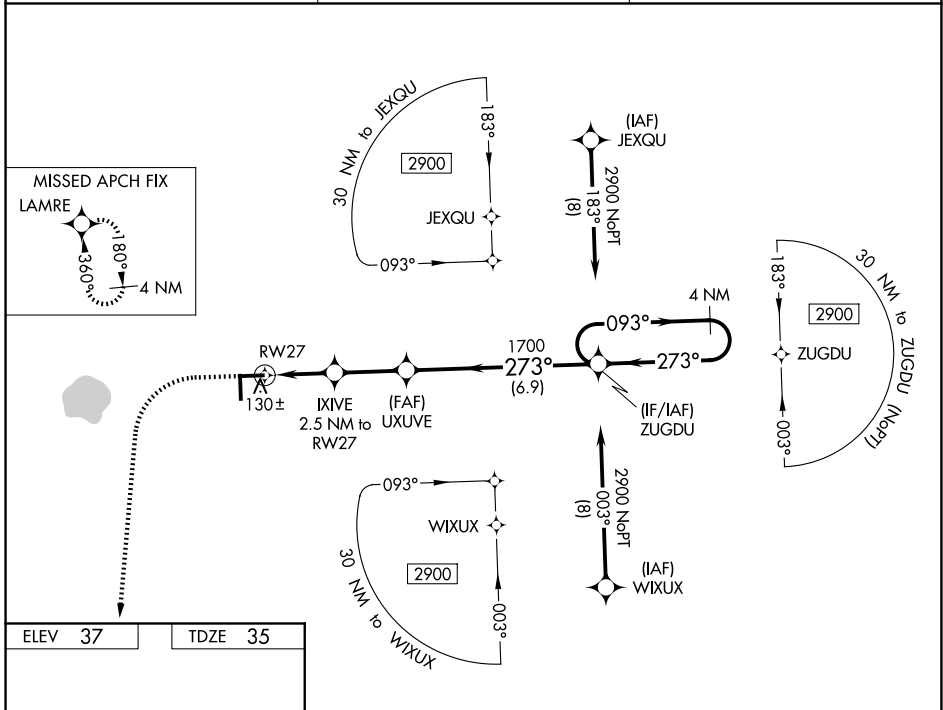


WAAS CH <b>69613</b> <b>W27A</b>	APP CRS <b>273°</b>	Rwy Ldg TDZE Apt Elev	<b>5000</b> <b>35</b> <b>37</b>
--	------------------------	-----------------------------	---------------------------------------

# RNAV (GPS) RWY 27

IMMOKALEE RGNL (IMIM)

RNP APCH.		MISSED APPROACH: Climb to 500 then climbing left turn to 2000 direct LAMRE and hold.
For uncompensated Baro-VNAV systems, LNAV/VNAV NA below 0°C (32°F) or above 54°C (130°F).		
AWOS-3 <b>118.525</b>	FORT MYERS APP CON ★ <b>124.125 371.85</b>	CTAF <b>122.9</b>



ELEV 37	TDZE 35	500	2000	LAMRE
*LNAV only.				
UXUVE 1700 IXIVE 2.5 NM to RWY 27 *0.9 NM to RWY 27 *880 1700 ZUGDU 4 NM Holding Pattern 093° → 2900 ← 273°				
CATEGORY	A	B	C	D
LPV DA		285-1	250 (300-1)	
LNAV/VNAV DA		311-1	276 (300-1)	
LNAV MDA		380-1	345 (400-1)	
CIRCLING	500-1 463 (500-1)	640-1 603 (700-1)	640-1 <sup>3</sup> / <sub>4</sub> 603 (700-1 <sup>3</sup> / <sub>4</sub> )	680-2 643 (700-2)

REIL Rwy 9, 18, 27, and 36   
MIRL Rwy 9-27 and 18-36

IMMOKALEE, FLORIDA  
Amdt 1A 16AUG18

26°26'N-81°24'W

# RNAV (GPS) RWY 27

SE-3, 14 MAY 2026 to 11 JUN 2026

SE-3, 14 MAY 2026 to 11 JUN 2026